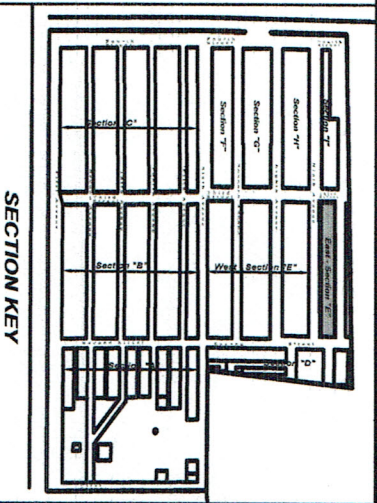


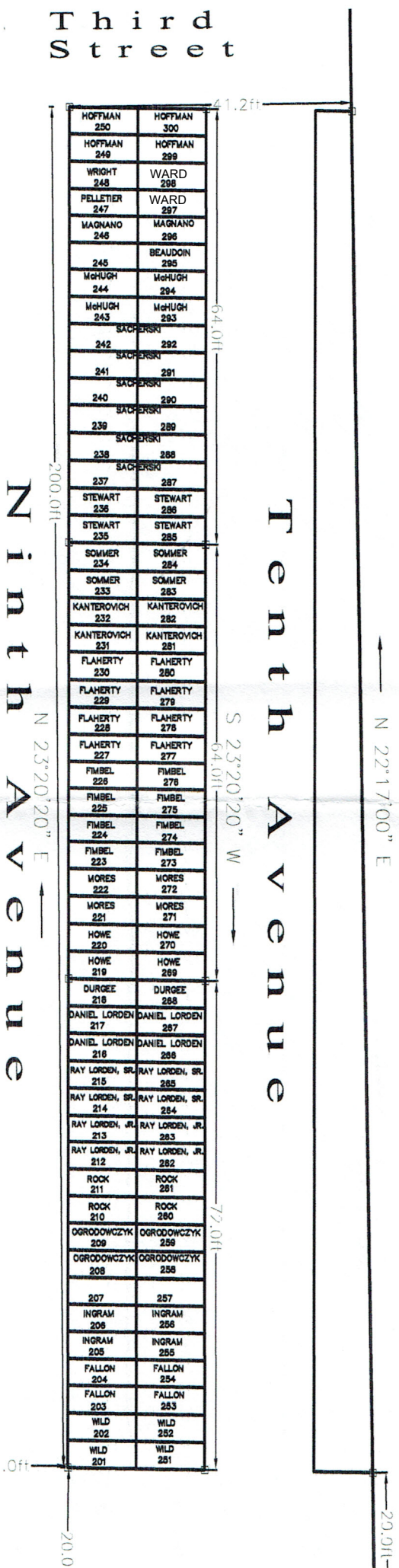
Lot #	Sold To:	Lot #	Sold To:	Lot #	Sold To:	Lot #	Sold To:	Lot #	Sold To:	Lot #	Sold To:
201	WILD	216	LORDEN, DANIEL	231	KANTEROVICH	246	MAGNANO	261	ROCK	276	FIMBEL
202	WILD	217	LORDEN, DANIEL	232	KANTEROVICH	247	PELLETIER	262	RAY LORDEN, JR.	277	FLAHERTY
203	FALLON	218	DURGEE	233	SOMMER	248	WRIGHT	263	RAY LORDEN, JR.	278	FLAHERTY
204	FALLON	219	HOWE	234	SOMMER	249	HOFFMAN	264	RAY LORDEN, SR.	279	FLAHERTY
205	INGRAM	220	HOWE	235	STEWART	250	HOFFMAN	265	RAY LORDEN, SR.	280	FLAHERTY
206	INGRAM	221	MORES	236	STEWART	251	WILD	266	LORDEN, DANIEL	281	KANTEROVICH
207		222	MORES	237	SACHERSKI	252	WILD	267	LORDEN, DANIEL	282	KANTEROVICH
208	OGRODOWCZYK	223	FIMBEL	238	SACHERSKI	253	FALLON	268	DURGEE	283	SOMMER
209	OGRODOWCZYK	224	FIMBEL	239	SACHERSKI	254	FALLON	269	HOWE	284	SOMMER
210	ROCK	225	FIMBEL	240	SACHERSKI	255	INGRAM	270	HOWE	285	STEWART
211	ROCK	226	FIMBEL	241	SACHERSKI	256	INGRAM	271	MORES	286	STEWART
212	RAY LORDEN, JR.	227	FLAHERTY	242	SACHERSKI	257		272	MORES	287	SACHERSKI
213	RAY LORDEN, JR.	228	FLAHERTY	243	McHUGH	258	OGRODOWCZYK	273	FIMBEL	288	SACHERSKI
214	RAY LORDEN, SR.	229	FLAHERTY	244	McHUGH	259	OGRODOWCZYK	274	FIMBEL	289	SACHERSKI
215	RAY LORDEN, SR.	230	FLAHERTY	245		260	ROCK	275	FIMBEL	290	SACHERSKI



PLAN REFERENCES:

1. "LAYOUT OF EAST CEMETERY ADDITION, HOLLIS-NH., BY R. FORAGE LUND, SCALE 1"=20', DATED NOVEMBER 1974," DEED REFERENCE 1343/364.
2. "SECTION E EAST CEMETERY, HOLLIS, NH, SCALE 1"=10', DATED 2-24-90, REVISED 5-4-90 (NUMBERS CHANGED), BY D.W. SMITH L.L.S."

SECTION E CONTAINS 100 SINGLE GRAVE LOTS EACH 4'X10'



COPYRIGHT STATEMENT:
Note: The intended use of this electronic drawing file is for the sole use of the Town of Hollis. Any other use or modification by others, in part, or as a whole is by permission of R.L. Ouellette Assoc. LLC and is protected by applicable copyright laws.

DRAFTED: JMW / CHECKED: RLO		Prepared By: R. L. Ouellette Associates, LLC 17 Cleveland Hill Road Brookline, New Hampshire 03033 (603) 673-5314 - Office		Prepared For: Cemetery Trustees 7 Monument Square Hollis, NH 03049		Scale: 1" = 10' Date: November 16, 2010 Sheet: 4 of 9		East - SECTION "E" East Cemetery WHEELER ROAD HOLLIS, NH	
1	8/19/15	OWNERSHIP REVISIONS	J.T.						
REVISION	DATE	DESCRIPTION	BY						