

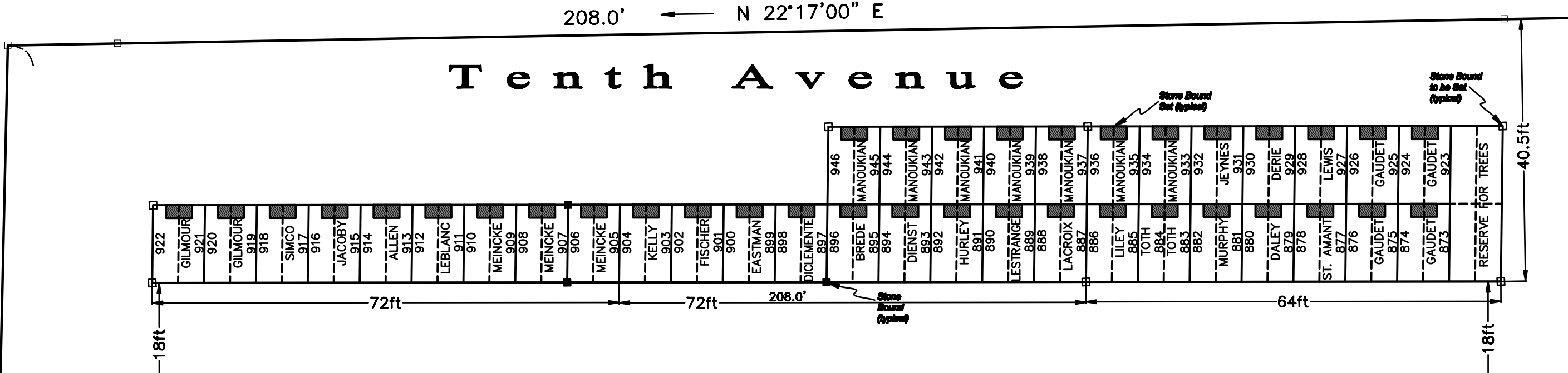
Lot #	Sold To:	Lot #	Sold To:	Lot #	Sold To:	Lot #	Sold To:	Lot #	Sold To:	Lot #	Sold To:	Lot #	Sold To:
873	GAUDET	885	LILEY	897	DICLEMENTE	909	MEINCKE	921	GILMOUR	933	MANOUKIAN	945	MANOUKIAN
874	GAUDET	886	LILEY	898	DICLEMENTE	910	MEINCKE	922	GILMOUR	934	MANOUKIAN	946	MANOUKIAN
875	GAUDET	887	LACROIX	899	EASTMAN	911	LEBLANC	923	GAUDET	935	MANOUKIAN		
876	GAUDET	888	LACROIX	900	EASTMAN	912	LEBLANC	924	GAUDET	936	MANOUKIAN		
877	ST. AMANT	889	LESTRANGE	901	FISCHER	913	ALLEN	925	GAUDET	937	MANOUKIAN		
878	ST. AMANT	890	LESTRANGE	902	FISCHER	914	ALLEN	926	GAUDET	938	MANOUKIAN		
879	DALEY	891	HURLEY	903	KELLY	915	JACOBY	927	LEWS	939	MANOUKIAN		
880	DALEY	892	HURLEY	904	KELLY	916	JACOBY	928	LEWS	940	MANOUKIAN		
881	MURPHY	893	DIENT	905	MEINCKE	917	SIMCO	929	DERIE	941	MANOUKIAN		
882	MURPHY	894	DIENT	906	MEINCKE	918	SIMCO	930	DERIE	942	MANOUKIAN		
883	TOTH	895	BREDE	907	MEINCKE	919	GILMOUR	931	JEYNES	943	MANOUKIAN		
884	TOTH	896	BREDE	908	MEINCKE	920	GILMOUR	932	JEYNES	944	MANOUKIAN		

PLAN REFERENCES:

1. "LAYOUT OF EAST CEMETERY ADDITION, HOLLIS-N.H., BY R. FORACE LUND, SCALE 1"=20', DATED NOVEMBER 1974" DEED REFERENCE 1343/364.
2. "SECTION I, EAST CEMETERY, HOLLIS, NH, SCALE 1"=10', DATED 3-29-96, BY DW SMITH LLS."

INDIVIDUAL GRAVE LOTS ARE 4'X12'
LOTS ARE TO BE SOLD 2 AT A TIME
EXAMPLE LOTS 873 & 874 = 1-2 GRAVE LOT

COPYRIGHT STATEMENT:
Note: The intended use of this electronic drawing file is for the sole use of the Town of Hollis. Any other use or modification by others, in part, or as a whole is by permission of R.L. Ouellette Assoc. LLC and is protected by applicable copyright laws.



DRAFTED: JRW / CHECKED: RLO			
REVISION	DATE	DESCRIPTION	BY
2	4/11/18	OWNERSHIP REVISIONS	J.W.
1	8/18/15	OWNERSHIP REVISIONS	J.T.

Prepared By:
R. L. Ouellette Associates, LLC
17 Cleveland Hill Road
Brookline, New Hampshire 03033
(603) 673-5314 - Office

Prepared For:
Cemetery Trustees
7 Monument Square
Hollis, NH 03040

Scale: not to scale
Date: November 16, 2010
Sheet: 9 of 9

SECTION "I"
East Cemetery
WHEELER ROAD
HOLLIS, NH