



# ▀ Town Forest Management Plan

Jim Oehler, Certified Wildlife Biologist, Hollis, NH



# Town Forests

- Authorities - RSA 31:110-113; RSA 41:11-a;
- Established by town vote;
- Managed by a forestry committee.

Purpose - to encourage and demonstrate good forest management.

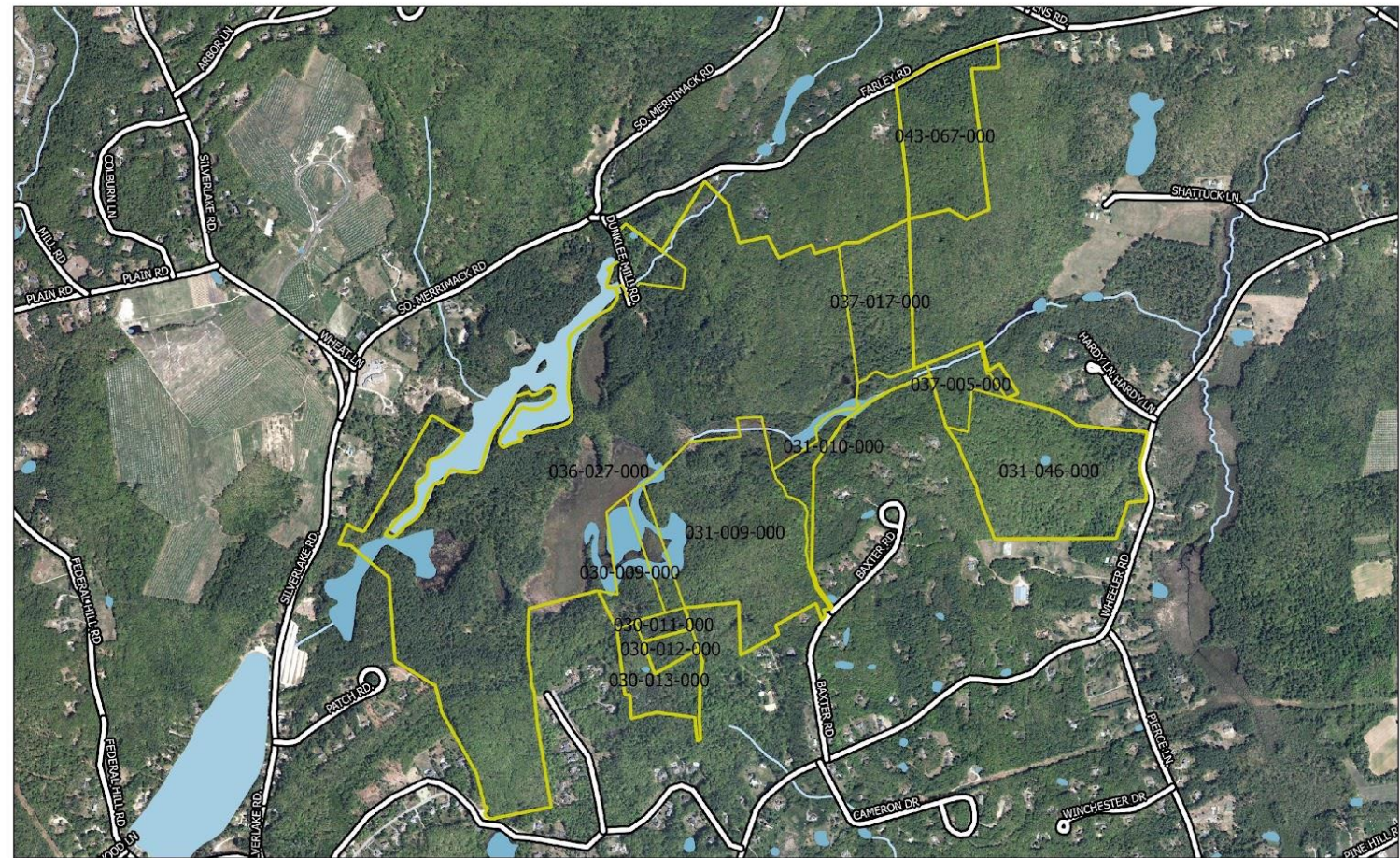




# Forestry Committee

## Goals

1. To demonstrate good forest management;
2. Provide diverse and meaningful outdoor recreation opportunities;
3. Wildlife and natural resource conservation



**Town of Hollis - Town Forest  
Tax Lots**



0 1000 2000 ft

575 acres – 12 tax lots

Acquisitions 1916 - 2019



## Management History

- 1950s - 90s



Pruning, thinning, and improvement cutting –  
remove poor quality trees and improve growth.

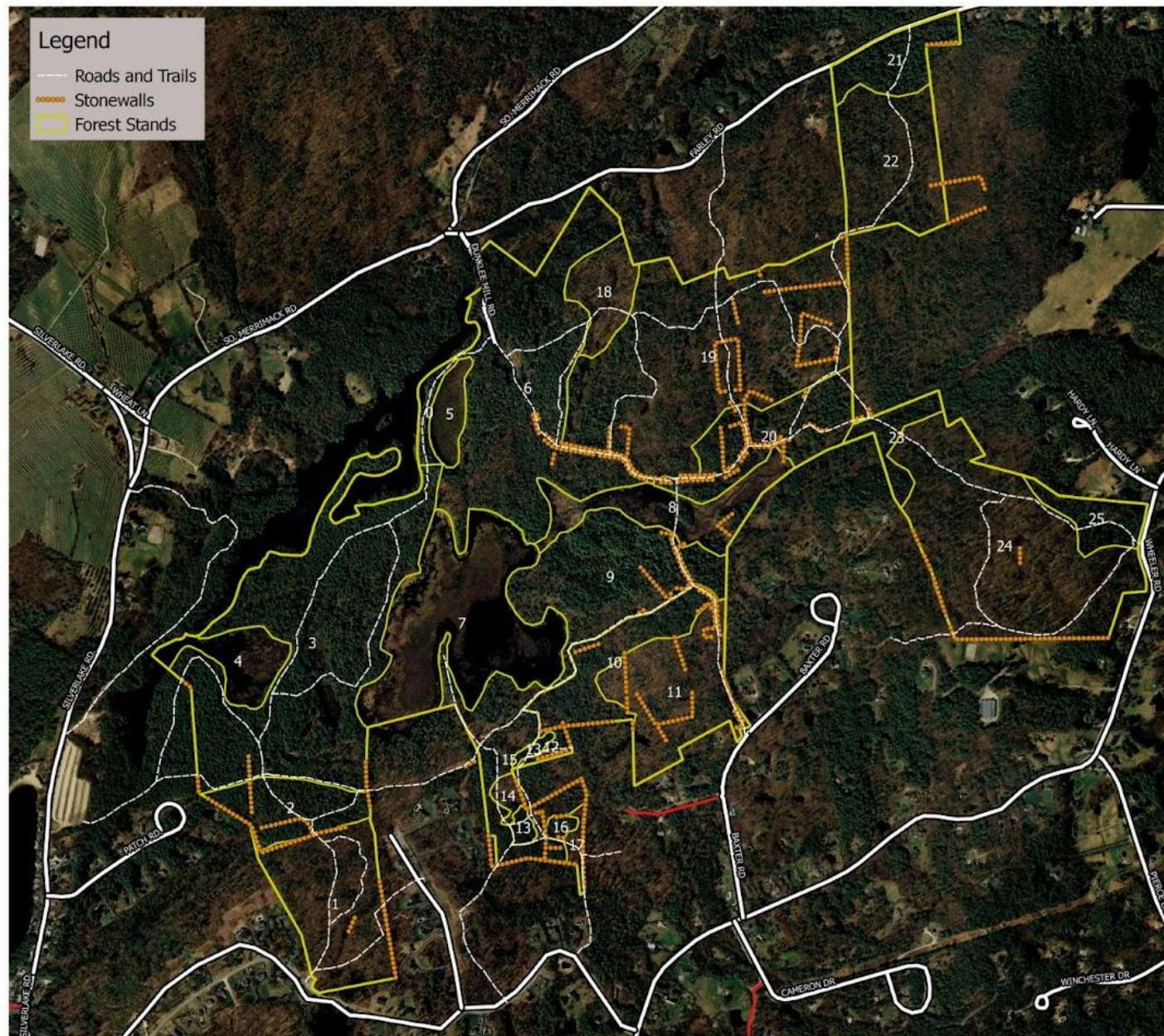


## Management History

- 1970s - Today



More extensive harvests –  
Reap the benefits of past tending, generate revenue,  
and enhance wildlife habitat.



## Hollis Town Forest Forest Stands

Stand Number	Stand Type	Acres
1	RO 4	27.51
2	WP 5	13.23
3	WP 4/5	78.77
4	WT	9.67
5	WT	5.29
6	WP 5	62.04
7	WT	46.22
8	WT	16.87
9	WP/MH 4/5	31.98
10	RO/HM 4	14.82
11	MH 4/5	24.99
12	WP 5	1.54
13	RP 4/5	2.18
14	MH 3/4	1.74
15	WP 4/5	18.43
16	WP/MH 3/4	1.11
17	MH 3	1.71
18	MO 4	9.69
19	WP/RO 4/5	75.75
20	WP 4/5	20.35
21	WP/HM 4/5	10.87
22	WP/RO 4/5	24.67
23	WP 5	5.86
24	RO 4/5	58.87
25	WP 5	7.45

**NORTH** ↑

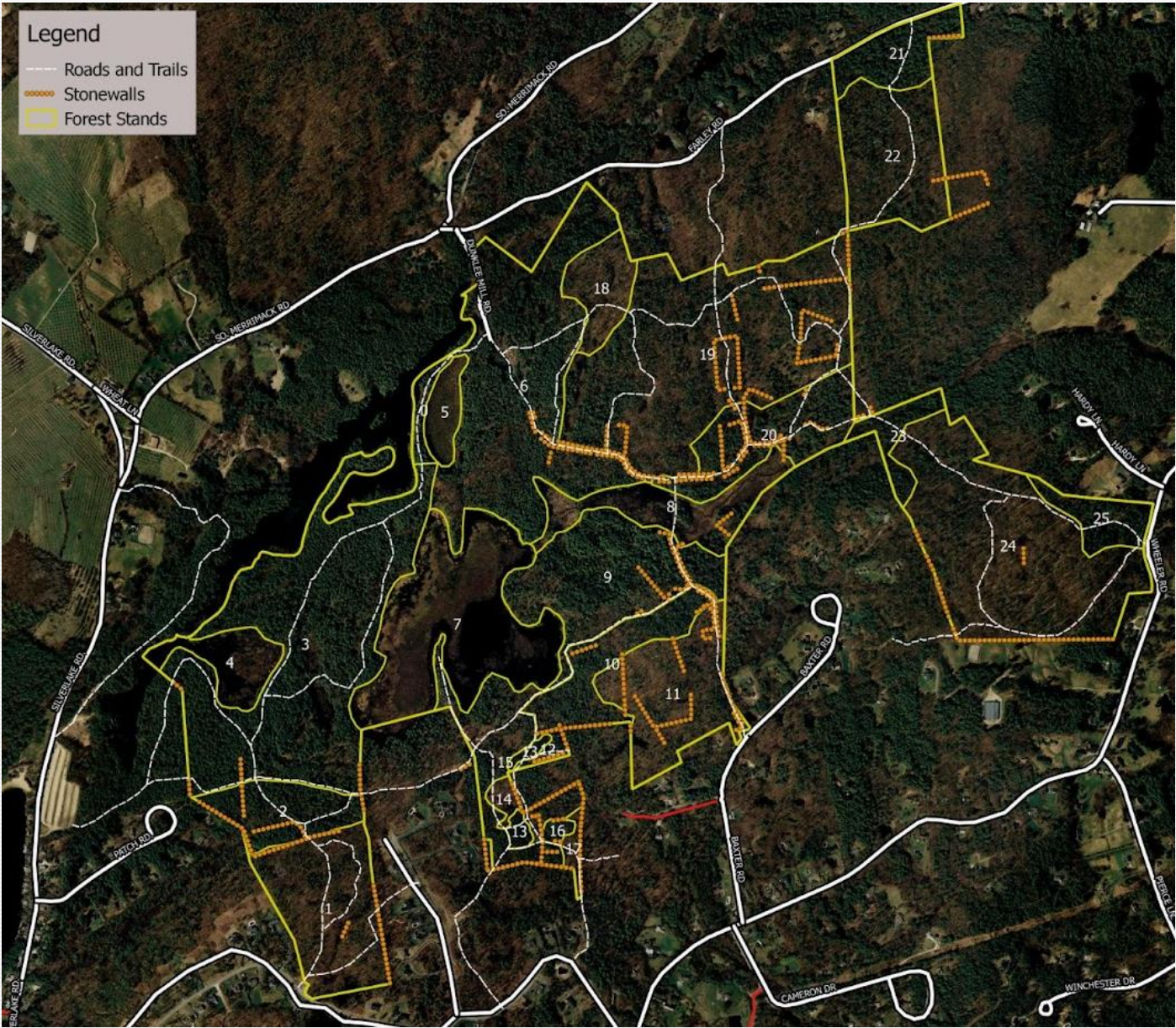
1000 0 1000 ft



# Forestry Recommendations

Stand	Rx	Last Managed
3	Thin	1990s
6	Thin	1980s
9	Shelterwood	1970s

- Enhance growth of retained trees;
- Promote growth of new seedlings;
- Reduce Caliciopsis canker.





# Forestry Recommendations

Stand	Rx	Last Managed
3	Thin	1990s
6	Thin	1980s
9	Shelterwood	1970s

- Enhance growth of retained trees;
- Promote growth of new seedlings;
- Reduce Caliciopsis canker.



Stand 3  
WP4/5  
78.77 acres



Stand 6  
WP 5  
62.05 acres



# Forestry Recommendations

Stand	Rx	Last Managed
3	Thin	1990s
6	Thin	1980s
9	Shelterwood	1970s

- Enhance growth of retained trees;
- Promote growth of new seedlings;
- Reduce Caliciopsis canker.

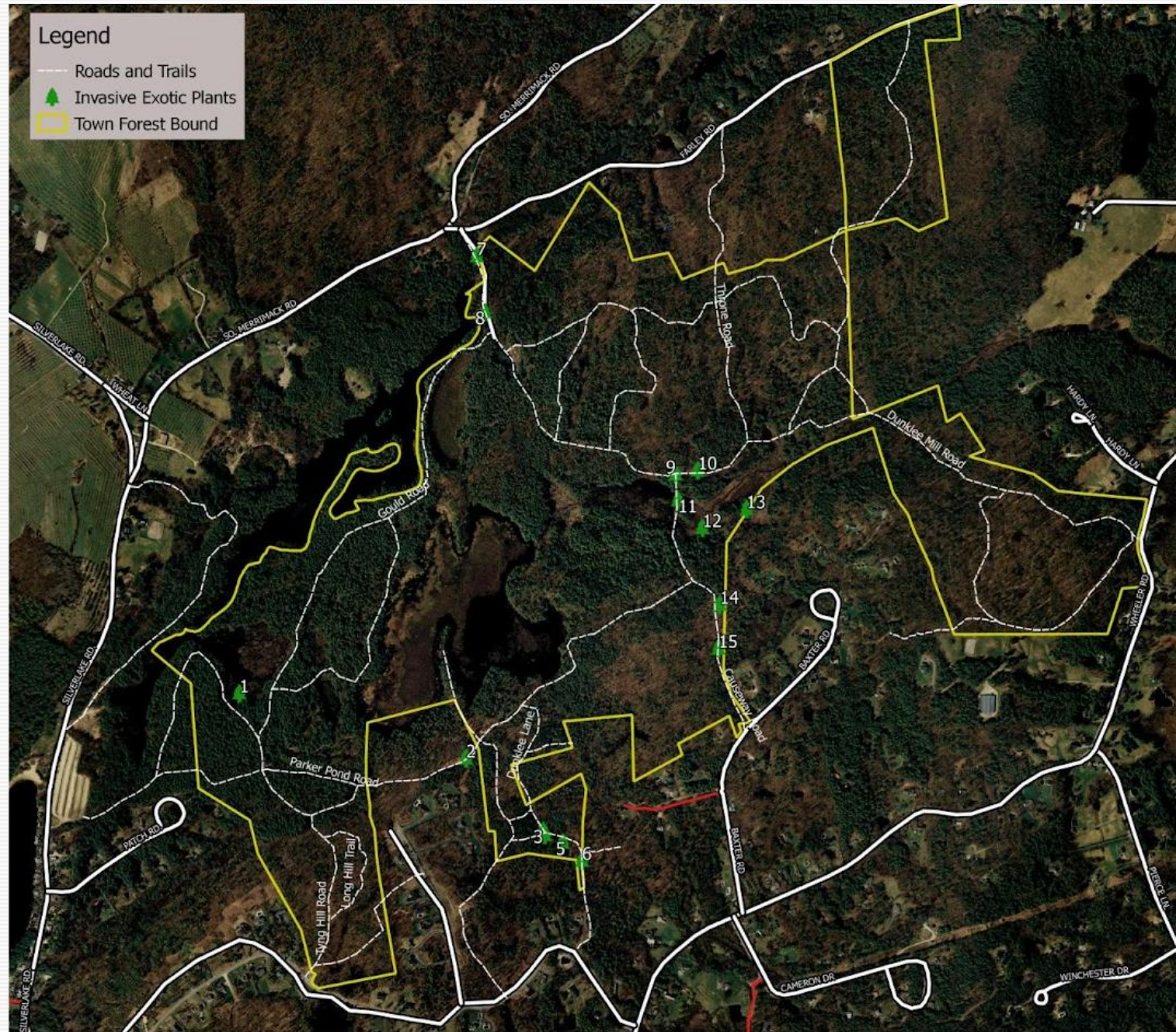


Stand 9  
WP/MH 4/5  
31.98 acres



# Invasive Exotic Plants

- 15 locations
- Most associated with historic settlements
- Hand pulling, targeted herbicide applications.





# Wildlife

- 85 types of birds
- 29 potential species of greatest conservation need
- 1 recorded rare species; 4 other potentials
- Game species – deer, bear, turkey
- Use BMPs, maintain wetlands and vernal pools, diversify woodlands.





# Exemplary Natural Community

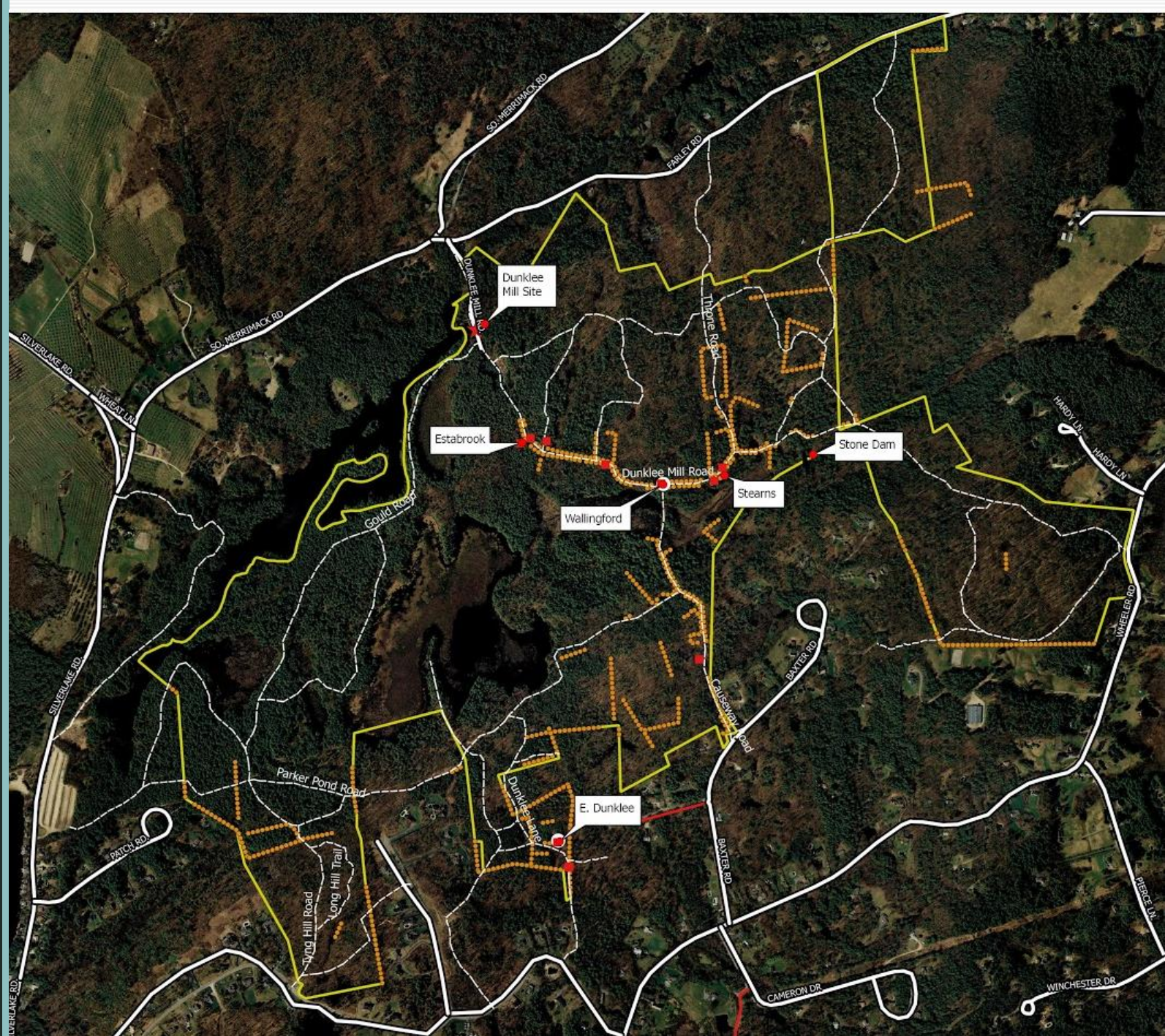
- kettle hole bog system
- locally known as Parker Pond or Parker Bog





# Historic Resources

- 5.6 miles of stonewalls
- Several foundations
- Dunklee Mill
- Stone dam





# Historic Resources

## Dunklee Mill

- In operation 100 years
- Grist mill and sawmill
- Sold to Pennichuck Water Works in 1906 – house torn down.



Dunklee family and mill (1890).





# Historic Resources

- Protect foundations.
- Use existing breaches in stonewalls.
- Partner with Historical Society
  - Document settlements.
  - Interpretive displays.
- Discourage private collection.



Foundations associated with the Stearns (top) and E. Dunklee settlements (right).



# Recreation

- 11 miles of woods roads;
- Maintained by the Hollis Trails Committee and the Nor'easters snowmobile club;
- 6 miles of unauthorized rogue trails
  - 8 bridges;
  - 4 obstacles;
  - a significant section of banking and leveling.





# Recreation

- 6 miles of unauthorized rogue trails
  - 8 bridges;
  - 4 obstacles;
  - a significant section of banking and leveling.



- Stonewall modified to create a ramp.
- One of the many bridges built without authorization.
- Banking and leveling along a steep slopes.

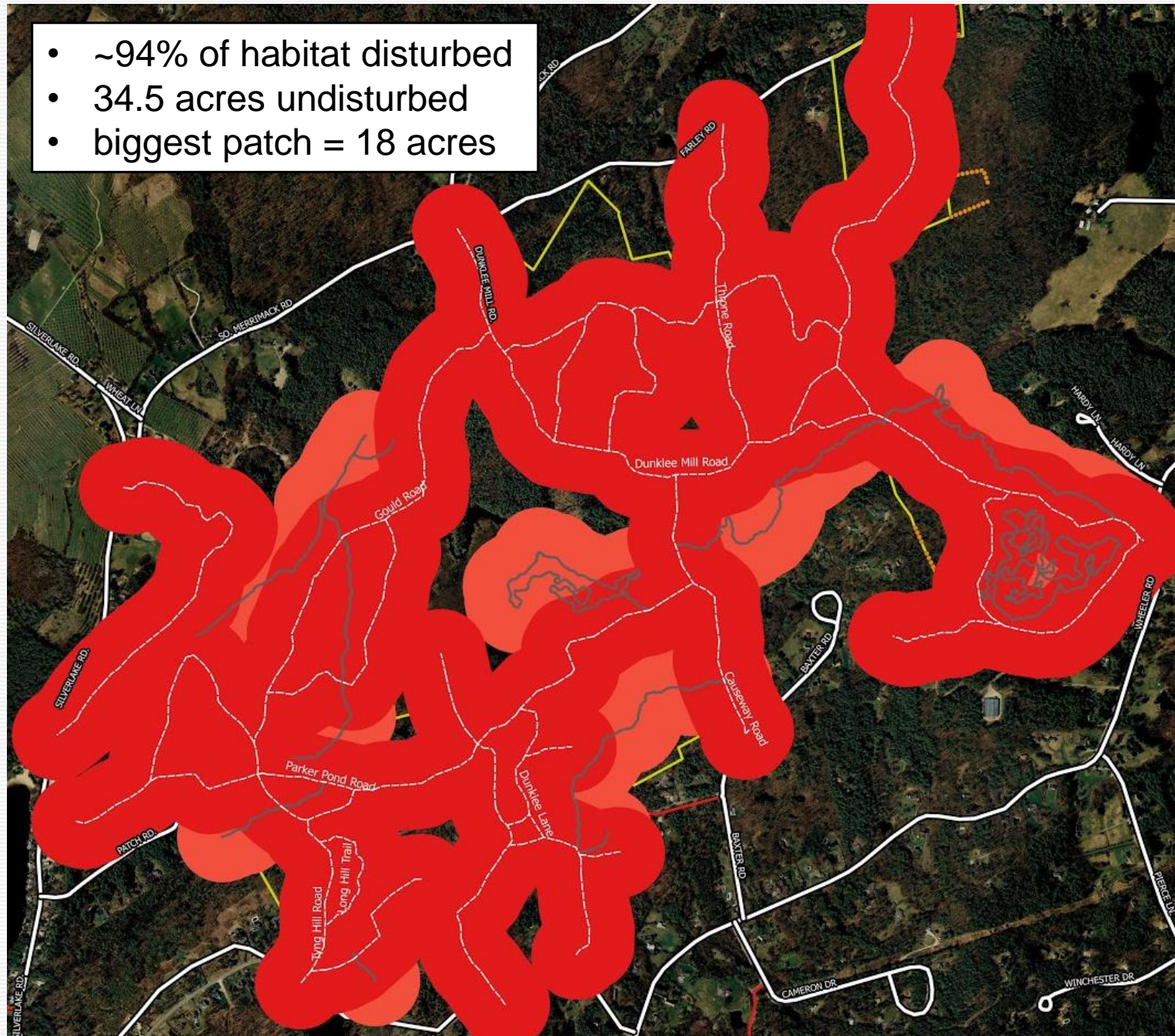




# Corridor of Influence

Wildlife can see and hear you coming from quite a distance.

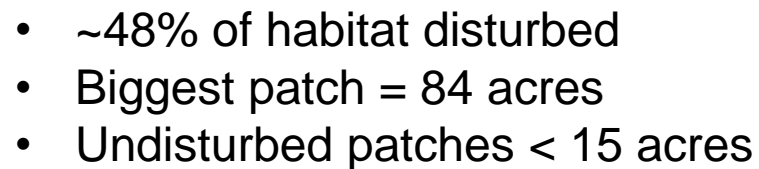
- Herps flee – 60 ft
- Birds disturbed – 150 ft
- **Mammals disturbed – 400 ft**





Wildlife can see and hear you coming from quite a distance.

- Herps flee – 60 ft
- **Birds disturbed – 150 ft**
- Mammals disturbed – 400 ft





# Recreation Recommendations

- Monitor and repair infrastructure.
- Allow hunting to aid in maintaining deer populations at suitable levels.
- If wildlife is a priority, consider decommissioning some trails.
- Monitor for new rogue trails and decommission.





# Hollis Town Forest

- Tremendous resource for the town of Hollis.
- Forest stands well managed.
- Managing recreation and infrastructure will be biggest challenges for the future.

THANK YOU!

