

NH STATEWIDE ASSET DATA EXCHANGE SYSTEM ROAD SURFACE MANAGEMENT SYSTEM

Town of Hollis, New Hampshire
November, 2018



Prepared By



Nashua Regional
Planning Commission
9 Executive Park Dr.
Merrimack, NH

In Partnership With:



NH Department of
Transportation



University of New Hampshire
Technology Transfer Center



Town of Hollis
New Hampshire

TABLE OF CONTENTS

1.0	INTRODUCTION	1
2.0	PROJECT SCOPE & TIME LINE.....	1
3.0	BENEFITS OF DEVELOPING A PAVEMENT MANAGEMENT PLAN.....	1
A.	INVENTORY OF PAVED ROADS	2
B	PRIORITIZING MAINTENANCE NEEDS	2
C	JUSTIFYING MAINTENANCE BUDGET INCREASES	2
D	MAKING EFFICIENT USE OF THE TOWN’S HIGHWAY BUDGET	2
E	PAVEMENT PRESERVATION AND MAINTENANCE CONCEPTS	3
4.0	INVENTORY INFORMATION.....	4
5.0	EVALUATION OF EXISTING ROADWAY CONDITIONS.....	4
6.0	RSMS SOFTWARE & PAVEMENT CONDITION INDEX.....	5
7.0	PAVEMENT CONDITION MAP	6
8.0	PAVEMENT CONDITION FORECASTING & ANALYSIS	7
9.0	SUMMARY OF PAVEMENT MAINTENANCE FORECASTING	8
A	SMOOTH BUDGET OVER 10-YEAR PLANNING HORIZON	8

FIGURES

FIGURE 1:	PAVEMENT DETERIORATION.....	3
FIGURE 2:	PAVEMENT STRESSES THAT WERE EVALUATED	4
FIGURE 3:	PAVEMENT CONDITION CATEGORIES BY MILEAGE	5
FIGURE 4:	PAVEMENT CONDITION MAP.....	6
FIGURE 5:	RSMS FORECASTING SCENARIO	7
FIGURE 6:	RSMS REPAIR OPTIONS.....	7

APPENDIX A – ANALYSIS RESULTS

APPENDIX TABLE 1:	ANNUAL REPAIR COST	1
APPENDIX TABLE 2:	ANALYSIS REPAIR COST & PAVEMENT CONDITION INDEX.....	1
APPENDIX TABLE 3:	ANALYSIS REPAIR COST BY REPAIR CATEGORY	1
APPENDIX TABLE 4:	PRIORITY REPORT	2
APPENDIX TABLE 5:	REPAIR DETAIL BY YEAR.....	10

This page intentionally left blank

1.0 INTRODUCTION

As part of the ongoing planning assistance to cities and towns within its membership district, the Nashua Regional Planning Commission (NRPC) has conducted a study to provide support for road surface assessment and pavement management to the Town of Hollis. This study was conducted using the Road Surface Management System (RSMS) software, which was developed by the Department of Civil Engineering at the University of New Hampshire, to assist municipalities in roadway surface management and maintenance.

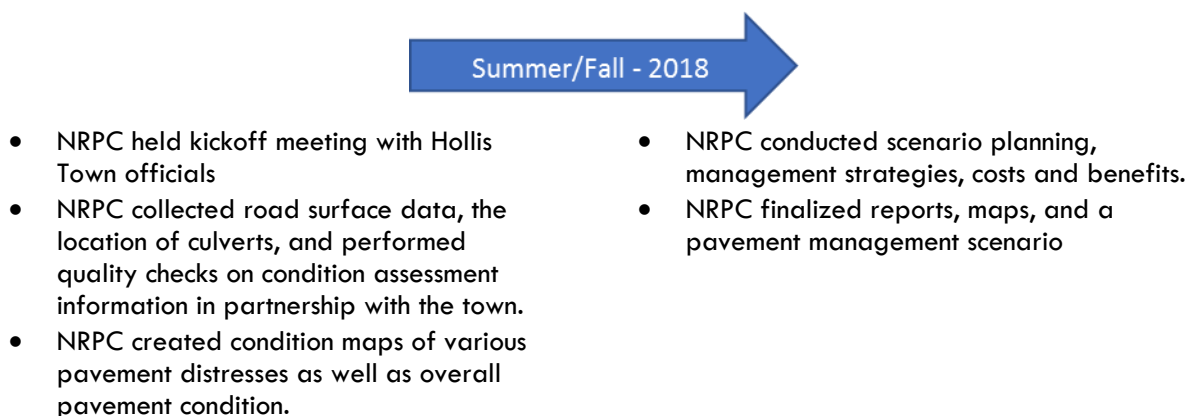
RSMS is a methodology intended to provide an overview and estimate of a road system's condition and the approximate costs for future improvements. RSMS provides a systematic approach for local officials to answer basic questions about their road system, to gauge current network conditions and to guide future improvement and investment in line with municipal Capital Improvement Programs. The RSMS program provides information on the condition, traffic, and importance of roads in a town to create a long term maintenance program.

In 2015-2016, New Hampshire Department of Transportation (NH DOT) partnered with the UNHT2 and all nine regional planning commissions (RPCs) in the State to update the RSMS platform while simultaneously developing a larger base of regional training capacity to introduce more municipalities to the asset management program. This effort began with an RSMS pilot program in each regional planning district in the State, called SADES RSMS or SRSMS.

NRPC participated in the pilot study and used that experience along with the updated RSMS platform to develop this report for the Town of Hollis.

2.0 PROJECT SCOPE & TIME LINE

This current project in Hollis began with a kickoff meeting with town officials and continued by conducting an inventory of pavement conditions on paved Class V roads, followed by the production of maps, and pavement management scenario planning. Project deliverables included maps of pavement condition, the development of a road segment priority list based on traffic and importance and one (1) 10-year maintenance plan scenario. The project schedule is shown here:



3.0 BENEFITS OF DEVELOPING A PAVEMENT MANAGEMENT PLAN

The process of creating this pavement management plan included putting together an inventory of all paved roads in Hollis, assessing the conditions of those roads and then analyzing this information. The information will benefit Hollis in ways that are explained below.

A. INVENTORY OF PAVED ROADS

Many municipalities simply need to know what the road network consists of in terms of pavement structure and location. The software associated with this plan allows town officials to easily produce a simple list of all paved roads in Hollis, along with associated attributes such as road width, shoulder width, type of shoulder and other attributes.

B. PRIORITIZING MAINTENANCE NEEDS

This pavement management plan provides a prioritized list of maintenance needs for the road system in Hollis and therefore an objective way of prioritizing maintenance projects when existing resources are insufficient to meet all needs.

C. JUSTIFYING MAINTENANCE BUDGET INCREASES

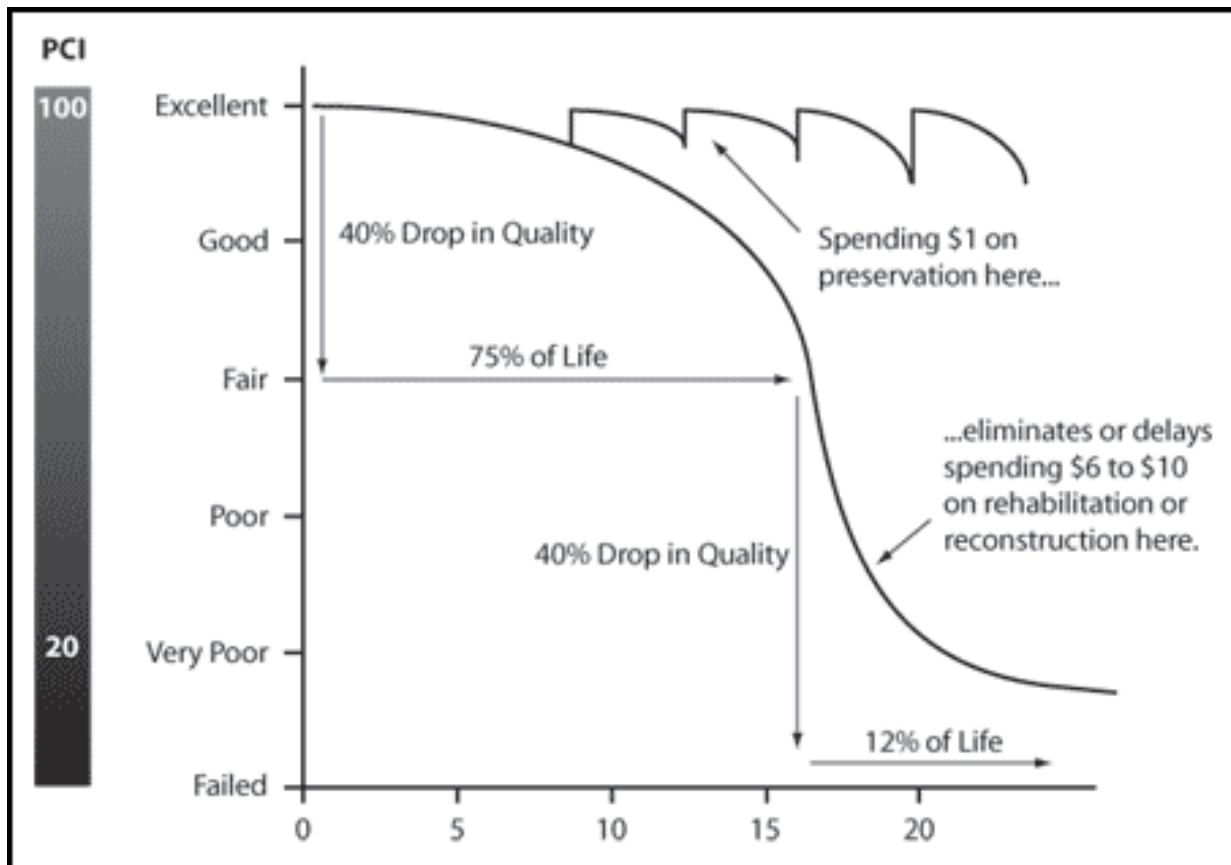
Town administration and other officials will find it helpful to have an objective means of portraying maintenance needs to elected officials and voters and to be able to forecast the consequences of deferred maintenance both in terms of future costs and future pavement conditions.

D. MAKING EFFICIENT USE OF THE TOWN'S HIGHWAY BUDGET

It has been well documented that for about 75 percent of a pavement's life, its serviceability and its cost of maintenance is less than one-fifth of the cost of maintaining/rehabilitating a pavement which has been allowed to enter the rapid deterioration stage of the last quarter of its design life. The "art" of good maintenance management is in knowing when a pavement has reached that critical 75 percent point. Each pavement deteriorates differently depending upon climate, type and volume of traffic, drainage, and many other variables, and often if a pavement is allowed to deteriorate to a point of serious visible distress, it is beyond the critical cost point. A pavement maintenance management system helps a Department of Public Works (DPW) director track this kind of deterioration for many sections of pavement. Further, after critical pavements have been identified, the pavement management system will help the DPW director select cost effective maintenance strategies based on the rate of deterioration and the expected life of a particular maintenance strategy.

Figure 1 (below) shows how the need for maintenance and repair is affected over time. The cost for maintenance and repair of roads which are repaired within the first 75 percent of the service life (within the 40 percent quality drop, fair to very good) is one-fourth to one-fifth the cost of maintenance and repair of roads that have deteriorated beyond the 75 percent mark. As shown in Figure 1, roads deteriorate at a faster rate beyond 75 percent of the service life. Roads experience a 40 percent drop in quality after 75 percent of the service life has passed; however, roads experience an additional 40 percent drop in quality soon after passing the 75 percent mark.

FIGURE 1: PAVEMENT DETERIORATION



E PAVEMENT PRESERVATION AND MAINTENANCE CONCEPTS

RSMS tools offer a finite number of repair options, generally in the following key categories:

Preservation

Rehabilitation

Reconstruction

Preservation consists of work that is planned and performed to improve or sustain the condition of a road segment that's already in a state of good repair. Preservation activities generally do not add capacity or structural value, but do restore the overall condition of the transportation facility. Preservation treatments are generally non-structural applications that preserve the surface and are designed to extend pavement life. The treatments can range from crack sealing to the application of thin overlays. Preservation is a proactive approach that can reap considerable cost savings because preservation strategies generally cost a fraction of rehabilitation or reconstruction projects.

Rehabilitation is generally considered to be a major repair, often an asphalt overlay following a surface preparation like a hot mix asphalt shim. Rehabilitation is more expensive than either maintenance or preservation, but less expensive than reconstruction.

Reconstruction, the most costly repair option, involves excavation and modification of the existing road base with additional aggregate as well as a new paved surface. This level of repair is usually required following inadequate maintenance, poor drainage, or improper base materials. Reconstruction, such as full-depth reclamation, is much more costly than other repair options.

4.0 INVENTORY INFORMATION

The Hollis DPW supplied information on roads maintained by the Town. The information was then incorporated into the UNHT2 database. Only Town maintained (Class V) paved roads were inventoried for this plan. Local unpaved and Class VI roads and state maintained roads were not included in this plan.

5.0 EVALUATION OF EXISTING ROADWAY CONDITIONS

With assistance from the DPW, NRPC performed an assessment of the Town's road surface conditions in the summer of 2018. The road surface assessment was an essential input to the RSMS software and scenario planning. NRPC staff conducted windshield surveys on approximately 71 miles of Class V paved roads, which were subdivided into segments of approximately one-quarter mile in length, as a way to provide flexibility in evaluating differing maintenance treatments segment by segment later on in the RSMS process.

The information for each segment was uploaded to the UNHT2 "cloud" database from the field immediately after each segment was surveyed.

Roadway surface distresses were described based on eight category types for paved roads. The road surface conditions were recorded based on the severity of each distress, which refers to the degree of the category type, and the extent of each distress, which refers to the frequency of the occurrence or the amount of the road surface subjected to a particular distress. The types of distresses are as follows:

FIGURE 2: PAVEMENT STRESSES THAT WERE EVALUATED

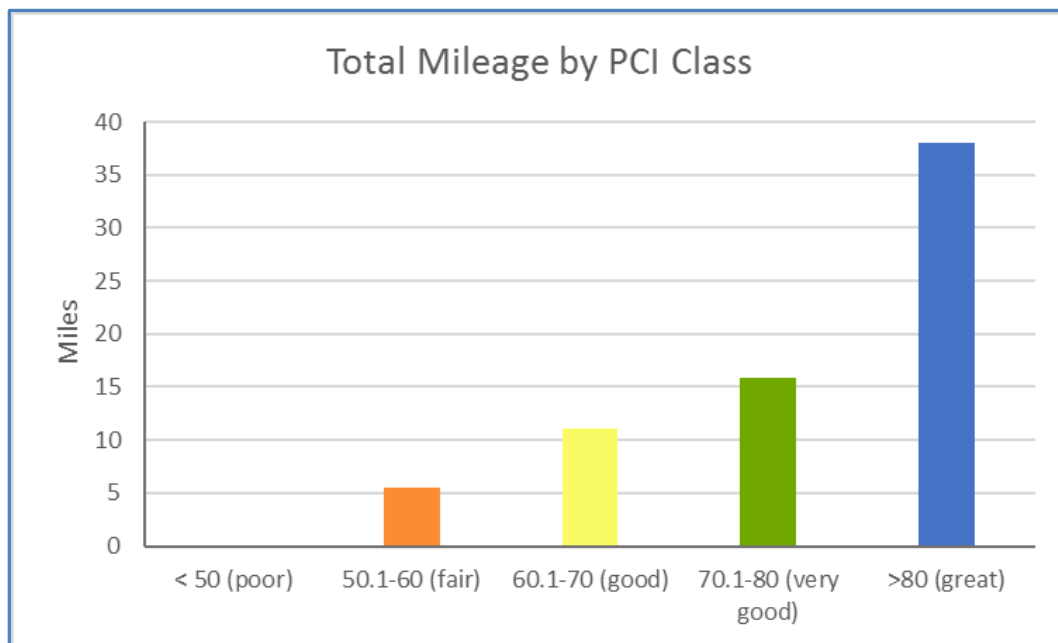
Longitudinal or Transverse Cracking	Severity (No Defects, Low, Medium, High)
	Extent (Low, Medium, High)
Alligator Cracking	Severity (No Defects, Low, Medium, High)
	Extent (Low, Medium, High)
Edge Cracking	Severity (No Defects, Low, Medium, High)
	Extent (Low, Medium, High)
Patching or Potholes	Extent (No Defects, Low, Medium, High)
Drainage	Condition (Good, Fair, Poor)
Rutting	Severity (No Defects, Low, Medium, High)
	Extent (Low, Medium, High)
Roughness	Condition (Smooth, Noticeably Uneven, Rough, Very Rough)
Frost Heave Severity	Severity (None, Low, Medium, Severe)

6.0 RSMS SOFTWARE & PAVEMENT CONDTION INDEX

The RSMS software uses inventory information and field data to assign an overall rating of pavement condition that is referred to as the pavement condition index (PCI). Roads scored with a PCI of greater than 80 are considered “great”. Roads with a PCI less than 50 are considered “poor”. All other values are considered to be in “fair”, “good” or “very good” condition. According to the PCI, the majority of Hollis’s pavements are in “great” condition. At the time of assessment, 38.0 miles (51.3%) were in “great” condition. Less than 1 mile (0.4%) “poor” condition, 5.5 (7.8%) miles were in “fair”, 11.1 (16.5%) miles were in “good” condition and 15.9 (24.1%) miles were in “very good” condition.

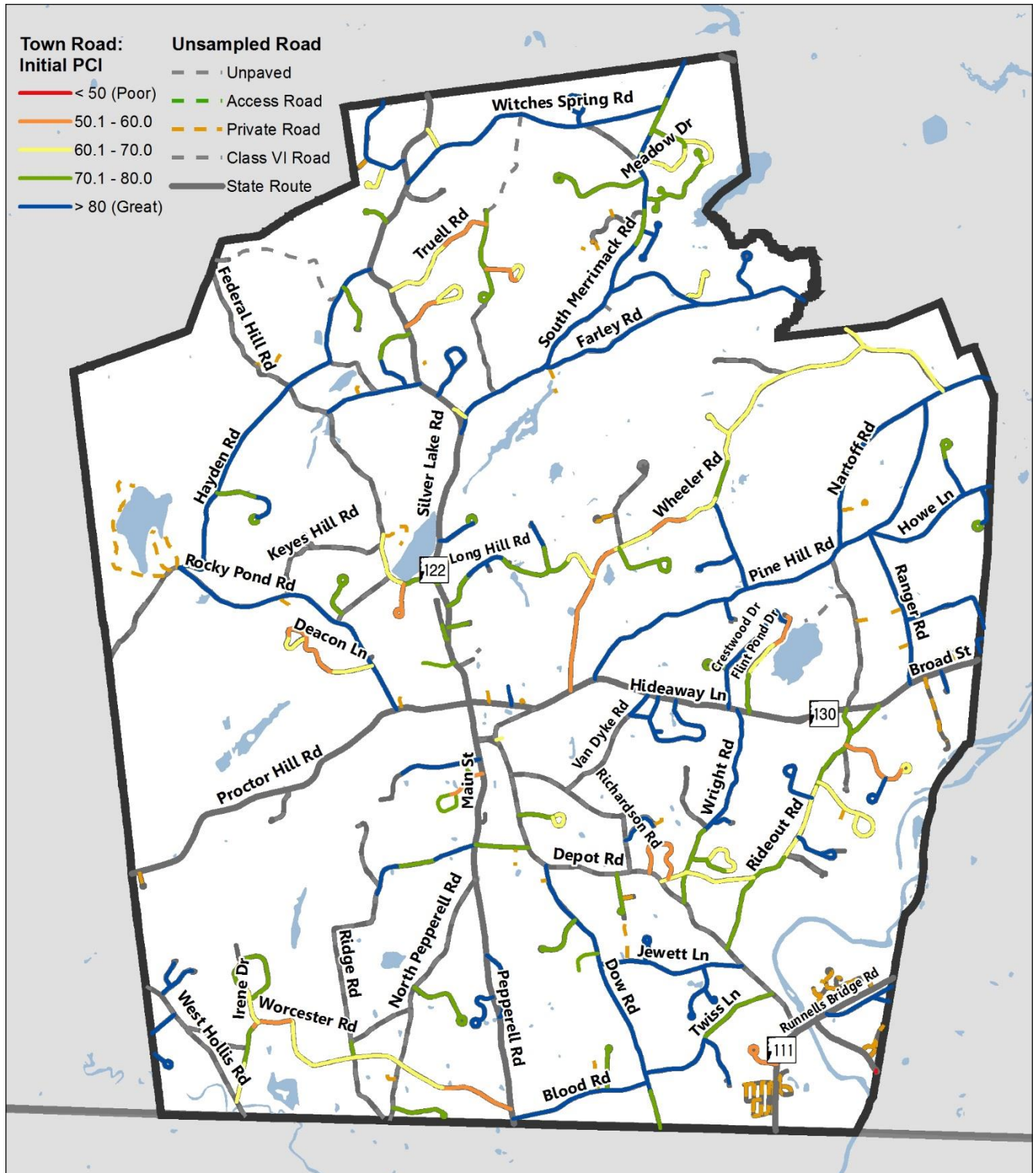
PCI Class	Total Mileage by PCI Class	%
< 50 (poor)	0.0	0.4%
50.1-60 (fair)	5.5	7.8%
60.1-70 (good)	11.1	16.5%
70.1-80 (very good)	15.9	24.1%
>80 (great)	38.0	51.3%
	70.6	100.0%

FIGURE 3: PAVEMENT CONDITION CATEGORIES BY MILEAGE



7.0 PAVEMENT CONDITON MAP

FIGURE 4: PAVEMENT CONDITON MAP



8.0 PAVEMENT CONDITION FORECASTING & ANALYSIS

NRPC staff used the RSMS analysis software to forecast pavement conditions and anticipate repair expenses over a 10-year planning horizon. The analysis maximizes the use of collected roadway information to provide the basis to develop a reasonable budget. It is important to understand that the results of the RSMS forecasting scenario provides repair suggestions for estimated repair costs. In addition, a number of costs were **not** taken into account through forecasting including: drainage (e.g. ditching, culverts, catch basins, underdrain, etc.), shoulders, signage, guardrail, sidewalks, utilities, curbing, and pavement markings. NRPC developed the following pavement maintenance forecasting scenario (Figure 5).

FIGURE 5: RSMS FORECASTING SCENARIO

Forecasting Scenario	Smooth Budget over 10-year Planning Horizon
----------------------	---

Individual treatments were applied to each road segment based on the PCI, recommended repairs from the analysis software, and feedback from the Department of Public Works director.

A list of common repairs, including preservation, maintenance, and reconstruction options available through the forecasting software are shown on the following in Figure 6.

FIGURE 6: RSMS REPAIR OPTIONS

CRACK SEALING

- Crack Seal (Major)
- Crack Seal (Minor)

OVERLAYS

- HMA Overlay (1")
- HMA Overlay (1.25")
- HMA Overlay (1.5")
- Milling/HMA Overlay (1.5")

PATCHING

- Isolated Patch & HMA Shim

PAVEMENT PRESERVATION/MAINTENANCE

- Chip Seal
- Double Chip Seal
- Fog Seal
- Sand Seal
- Microsurfacing (Single)
- HMA Shim (1/2") & Chip Seal
- Asphalt Rubber SAM
- Bonded Wearing Course
- HMA Shim (3/4")

REHABILITATE AND REBUILD

- Revert to Gravel
- FDR & CMA (4")
- FDR & HMA (4")
- FDR w/Asphalt Stabilization & HMA (3")
- FDR w/CaCl₂ & HMA (4")

9.0 SUMMARY OF PAVEMENT MAINTENANCE FORECASTING

A SMOOTH BUDGET OVER 10-YEAR PLANNING HORIZON

This forecasting scenario used the pavement management methodology that is preferred by Hollis town officials. That is, to have a smooth budget over the 10-year planning horizon.

Once the field data was incorporated into the data base, NRPC staff and the Hollis Road Agent convened to assign repair strategies for each segment of town road. The repair strategies that were used included crack sealing, HMA overlays, Milling/HMA overlays, Microsurfacing, Asphalt Rubber SAM, Bonded Wearing Course, and pavement rebuild.

Additionally, it was decided that a PCI of 70 would be maintained over the 10 year planning horizon. It is acknowledged that the statewide study group determined that a PCI of 80 indicates a road in “good” condition. However local conditions (traffic volume, traffic speeds, vehicle mix) suggest that a PCI of 70 is an appropriate goal to shoot for in Hollis.

This sceaniro resulted in a PCI that remained generally above 70 for the entire 10-year planning horizon and a smooth budget during the planning horizon.

The results of this analysis can be found in the tables in Appendix A.

- Table 1 lists the annual cost of repairs for each year in the 10-year planning horizon. A 3.2% annual inflation rate is assumed.
- Table 2 lists the Pavment Condition Index (PCI) before and after proposed repairs for each year in the 10-year planning horizon. The table also lists the total proposed miles to be treated and total cost of treatments.
- Table 3 lists the general categories of proposed repairs for each year and the costs for each of those categories.
- Table 4 lists all road segments in order based upon the calculated priority ranking. In other words, the road segment that should be repaired first is listed first and the road that should be fixed last is listed last.
- Table 5 lists repair detail by year. That is, for each year the table lists any road segment that is suggested for repair, the proposed repair, the length of the road segment and the the cost of that repair.
- Notes:
 - Witches Spring Road was paved after NRPC field work was completed. NRPC will update this analysis prior to finalizing this report.
 - Flint Pond Road requires an engineering study before a repair strategy can be determined. The cost of the engineering study and any suggested repairs are not included in this report.
 - Federal Hill Road requires an engineering study before a repair strategy can be determined. The cost of the engineering study and any suggested repairs are not included in this report.
 - Cavalier Court and Drury Lane are on School District property. The cost of repairs are not included in this report.

APPENDIX A ANALYSIS RESULTS (TABLES)

APPENDIX TABLE 1: ANNUAL REPAIR COST

Annual Repair Cost	
2019	\$633,676
2020	\$561,031
2021	\$614,926
2022	\$582,641
2023	\$339,157
2024	\$540,848
2025	\$358,604
2026	\$590,596
2027	\$633,166
2028	\$652,209
	\$5,507,213

APPENDIX TABLE 2: ANALYSIS REPAIR COST & PAVEMENT CONDITION INDEX

	2019	2020	2021	2022	2023	2024	2025	2026	2027	2028
Average PCI After Repairs	82.31	80.51	79.42	78.55	77.88	77.12	76.92	76.18	74.35	72.65
Average PCI Without Repairs	78.39	74.86	71.49	68.28	65.20	62.27	59.47	56.79	54.24	51.80
Total Miles Treated	16.45	6.27	9.31	9.79	9.99	8.87	11.25	7.17	2.25	2.26
Total Repair Cost	\$633,676	\$561,031	\$614,926	\$582,641	\$339,157	\$540,848	\$358,604	\$590,956	\$633,166	\$652,209

APPENDIX TABLE 3: ANALYSIS REPAIR COST BY REPAIR CATEGORY

Description	2019	2020	2021	2022	2023	2024	2025	2026	2027	2028
Crack Sealing	\$65,655	\$17,822	\$37,119	\$35,869	\$50,314	\$31,797	\$72,792	\$54,932	\$0	\$0
Deferred Maintenance	\$0	\$0	\$0	\$0	\$0	\$0	\$0	\$0	\$0	\$0
Overlays	\$383,666	\$310,893	\$394,956	\$356,067	\$166,884	\$142,887	\$243,083	\$0	\$0	\$0
Pavement Preservation & Maintenance	\$184,354	\$232,316	\$182,850	\$190,706	\$121,959	\$366,164	\$42,729	\$5,046	\$0	\$0
Rehabilitate and Rebuild	\$0	\$0	\$0	\$0	\$0	\$0	\$0	\$530,978	\$633,166	\$652,209
Total	\$633,676	\$561,031	\$614,926	\$582,641	\$339,157	\$540,848	\$358,604	\$590,956	\$633,166	\$652,209

APPENDIX TABLE 4: PRIORITY REPORT

Priority	PCI	Street	Order	Length (ft)
79.75	81	S Merrimack Rd	11	1,318
79.25	83	S Merrimack Rd	8	1,318
78.75	85	S Merrimack Rd	10	1,322
78.75	85	S Merrimack Rd	5	1,320
78.00	88	S Merrimack Rd	12	1,440
78.00	88	S Merrimack Rd	2	1,319
78.00	88	S Merrimack Rd	3	1,321
78.00	88	S Merrimack Rd	4	1,321
78.00	88	S Merrimack Rd	6	1,320
78.00	88	S Merrimack Rd	7	1,319
78.00	88	S Merrimack Rd	9	1,321
76.75	93	S Merrimack Rd	1	1,316
70.50	62	Cavalier Ct	1	1,319
68.50	70	Wheat Ln	1	486
68.25	95	Pine Hill Rd	5	1,320
67.25	75	Drury Ln	1	1,116
67.00	100	Pine Hill Rd	1	1,320
67.00	100	Pine Hill Rd	10	1,320
67.00	100	Pine Hill Rd	11	1,320
67.00	100	Pine Hill Rd	12	1,320
67.00	100	Pine Hill Rd	13	1,322
67.00	100	Pine Hill Rd	14	1,462
67.00	100	Pine Hill Rd	2	1,320
67.00	100	Pine Hill Rd	3	1,320
67.00	100	Pine Hill Rd	4	1,319
67.00	100	Pine Hill Rd	6	1,320
67.00	100	Pine Hill Rd	7	1,319
67.00	100	Pine Hill Rd	8	1,323
67.00	100	Pine Hill Rd	9	1,318
66.50	78	Cavalier Ct	2	1,891
63.50	90	Love Ln	2	1,410
61.00	100	Love Ln	1	1,321
59.25	71	Farley Rd	3	1,590
59.25	71	Farley Rd	1	1,320
59.00	72	Farley Rd	2	1,321
56.00	60	Worcester Rd	10	1,199
55.50	62	Worcester Rd	9	1,320
54.25	67	Federal Hill Rd	2	1,919

Priority	PCI	Street	Order	Length (ft)
54.00	68	Worcester Rd	6	1,319
53.50	70	Worcester Rd	7	1,319
53.00	76	Muzzey Rd	1	680
52.75	73	Worcester Rd	8	1,320
51.50	78	Federal Hill Rd	1	1,321
50.25	51	Witches Spring Rd	2	1,320
50.00	88	Glenice Dr	1	662
49.00	56	Wheeler Rd	3	1,322
49.00	60	Worcester Rd	3	1,320
48.75	57	Wheeler Rd	1	1,320
48.25	59	Wheeler Rd	6	1,320
48.25	63	Worcester Rd	5	1,320
48.00	60	Wheeler Rd	4	1,322
47.75	65	Worcester Rd	4	1,320
47.50	62	Wheeler Rd	2	1,320
47.25	63	Rideout Rd	5	1,321
47.25	63	Wheeler Rd	12	1,321
47.00	92	Farley Rd	6	1,319
46.75	93	Farley Rd	5	1,319
46.75	93	Farley Rd	7	1,667
46.25	67	Wheeler Rd	13	1,474
46.25	67	Wheeler Rd	7	1,320
46.00	68	Wheeler Rd	9	1,321
46.00	72	Worcester Rd	1	1,320
45.25	71	Witches Spring Rd	3	1,319
45.00	72	Rideout Rd	4	1,318
44.75	73	Ames Rd	1	781
44.75	73	Wheeler Rd	10	1,321
44.75	73	Wheeler Rd	11	1,321
44.75	73	Wheeler Rd	5	1,321
44.75	73	Witches Spring Rd	6	1,321
44.75	77	Worcester Rd	2	1,322
44.50	74	Witches Spring Rd	4	1,320
44.50	74	Witches Spring Rd	7	1,841
44.25	75	Rideout Rd	7	1,802
44.25	75	Witches Spring Rd	5	1,319
44.00	76	Rideout Rd	6	1,321
43.50	78	Rideout Rd	2	1,320
43.50	78	Wheeler Rd	8	1,321

Priority	PCI	Street	Order	Length (ft)
43.25	79	Jeff Smith Dr	1	576
43.25	83	Merrill Ln	1	1,822
43.25	79	Rideout Rd	1	1,320
43.25	79	Wright Rd	2	1,319
43.00	80	Wright Rd	1	1,320
42.75	81	Witches Spring Rd	1	1,321
42.50	82	Rideout Rd	3	1,322
42.25	83	Ridge Rd	9	1,319
41.50	86	Blood Rd	1	1,320
41.50	86	Blood Rd	2	1,320
41.50	86	Nevins Rd	1	1,320
41.50	86	Ridge Rd	10	1,462
41.50	86	Ridge Rd	8	1,319
41.25	55	Clinton Dr	1	1,685
41.00	88	Blood Rd	3	1,320
41.00	88	Nevins Rd	2	1,317
40.50	86	Rocky Pond Rd	3	1,320
40.50	90	Wright Rd	5	1,922
40.25	91	Blood Rd	4	860
40.25	91	Nevins Rd	3	851
40.25	87	Rocky Pond Rd	1	1,320
40.00		Hall Ave	1	242
40.00	88	Rocky Pond Rd	2	1,322
40.00		Winterberry Way	1	605
39.25	95	Farley Rd	1	1,320
39.25	95	Farley Rd	3	1,321
39.25	95	Farley Rd	4	1,321
39.25	95	Wright Rd	3	1,320
39.25	95	Wright Rd	4	1,320
39.00	100	Nartoff Rd	1	1,323
39.00	100	Nartoff Rd	2	1,320
39.00	100	Nartoff Rd	3	1,320
39.00	100	Nartoff Rd	4	1,320
39.00	100	Nartoff Rd	5	1,030
38.25	95	Gilson Rd	1	570
38.25	95	Old Runnells Bridge Rd	1	1,320
38.25	95	Old Runnells Bridge Rd	2	1,185
38.00	100	Farley Rd	2	1,321
36.50	78	Dow Rd	1	1,319

Priority	PCI	Street	Order	Length (ft)
35.50	82	Ridge Rd	3	540
35.50	78	Twiss Ln	4	1,525
35.00	80	Twiss Ln	3	1,319
34.50	86	Dow Rd	6	1,321
34.25	87	Dow Rd	5	1,320
34.25	87	Dow Rd	7	1,319
34.00	88	Dow Rd	3	1,321
34.00	88	Dow Rd	4	1,321
33.75	85	Rocky Pond Rd	5	1,320
33.50	86	Twiss Ln	1	1,320
33.25	91	Dow Rd	8	723
33.25	87	Hayden Rd	2	1,319
33.00	88	Hayden Rd	4	1,320
33.00	88	Howe Ln	1	1,320
33.00	88	Howe Ln	2	1,320
33.00	88	Howe Ln	3	1,320
33.00	88	Howe Ln	4	844
33.00	88	Plain Rd	1	1,320
33.00	88	Rocky Pond Rd		628
33.00	88	Twiss Ln	2	1,320
32.75	93	Dow Rd	2	1,321
31.75	93	Hayden Rd	1	1,319
31.75	93	Hayden Rd	10	1,575
31.75	93	Hayden Rd	3	1,320
31.75	93	Hayden Rd	5	1,320
31.75	93	Hayden Rd	6	1,320
31.75	93	Hayden Rd	7	1,319
31.75	93	Hayden Rd	8	1,320
31.75	93	Hayden Rd	9	1,321
31.75	93	Plain Rd	3	662
31.75	93	Rocky Pond Rd	4	1,320
31.75	93	Rocky Pond Rd	6	1,319
31.25	95	Rocky Pond Rd	7	1,319
31.00	100	Pierce Ln	1	1,321
31.00	100	Pierce Ln	2	1,834
30.50	98	Plain Rd	2	1,322
28.00	48	Dutton Ln	1	52
26.75	53	Deacon Ln	2	1,320
26.75	53	Powers Rd	1	1,322

Priority	PCI	Street	Order	Length (ft)
26.75	53	Sherwood Dr	1	1,319
26.75	53	Sherwood Dr	2	1,641
26.75	53	Winding Valley Rd	1	1,676
26.50	86	Ranger Rd	4	1,489
26.25	55	Sargent Rd	1	1,320
26.00	56	Deacon Ln	3	1,320
26.00	88	Jewett Ln	1	1,319
26.00	88	Jewett Ln	4	1,019
25.75	57	Arbor Ln	1	1,320
25.75	57	Flint Pond Dr	3	1,235
25.75	57	Truell Rd	3	1,742
25.50	58	Powers Rd	2	1,320
25.25	91	Jewett Ln	2	1,321
24.75	93	Jewett Ln	3	1,320
24.25	63	Deacon Ln	4	1,215
24.25	63	Irene Dr	1	1,320
24.25	95	Ranger Rd	1	1,320
24.25	95	Ranger Rd	2	1,320
24.25	95	Ranger Rd	3	1,319
23.25	67	Deacon Ln	1	1,320
23.00	68	Buttonwood Dr	2	1,320
23.00	68	Truell Rd	2	1,319
22.75	69	Arbor Ln	2	1,320
22.75	69	French Mill Rd	2	1,964
22.75	69	Hannah Dr	2	1,321
22.75	69	Hardy Ln	1	1,141
22.75	69	Meadow Dr	3	1,742
22.75	69	Powers Rd	3	833
22.50	70	Cleasby Ln	1	208
22.50	70	Hannah Dr	1	1,320
22.50	70	Truell Rd	1	1,319
22.25	71	Arbor Ln	3	839
22.25	71	Buttonwood Dr	3	850
22.25	71	Forrence Dr	1	1,594
22.25	71	Hannah Dr	3	1,352
22.25	71	Orchard Dr	2	1,062
22.00	72	French Mill Rd	1	1,319
22.00	72	Milton Pl	2	1,864
22.00	72	Sargent Rd	2	925

Priority	PCI	Street	Order	Length (ft)
21.75	73	Flint Pond Dr	2	1,320
21.75	73	Fox Den Rd	1	1,338
21.75	73	Tyng Hill Rd	1	1,320
21.50	74	Alsun Dr	1	1,320
21.50	74	Eastman Ln	2	713
21.50	74	Fieldstone Dr	1	1,654
21.25	75	Buttonwood Dr	1	1,318
21.25	75	Cameron Dr	1	1,321
21.25	75	Deer Run Rd	2	817
21.25	75	Flint Pond Dr	1	1,320
21.25	75	Meadow Dr	1	1,315
21.25	75	Meadow Dr	2	1,323
21.00	76	Alsun Dr	2	1,320
21.00	76	Eastman Ln	1	1,320
21.00	76	Irene Dr	2	1,320
21.00	76	Irene Dr	3	1,320
21.00	76	Tyng Hill Rd	2	803
20.75	77	Alsun Dr	3	1,505
20.75	77	Black Oak Dr	2	1,646
20.75	77	Colburn Ln	2	1,569
20.75	77	Farm Pond Ln	1	688
20.75	77	Long Hill Rd	1	1,320
20.75	77	Milton Pl	1	1,320
20.75	77	Oakwood Ln	1	775
20.75	77	Orchard Dr	1	1,321
20.75	77	Parker Ln	1	1,396
20.75	77	Shedd Ln	1	1,611
20.75	77	Shipley Dr	2	818
20.50	78	Black Oak Dr	1	1,319
20.50	78	Cameron Dr	2	1,773
20.50	78	Southgate Rd	1	1,751
20.25	79	Mendelssohn Dr	2	1,267
20.00	80	Mooar Hill Rd	1	1,320
19.75	81	Apple Ln	2	723
19.75	81	Bell Ln	1	1,074
19.75	81	Forest View Dr	3	723
19.75	81	Hickory Ln	1	535
19.75	81	Lund Ln	1	539
19.75	81	Patch Rd	2	712

Priority	PCI	Street	Order	Length (ft)
19.75	81	Toddy Brook Rd	1	1,043
19.50	82	Deer Run Rd	1	1,318
19.50	82	Irene Dr	4	966
19.50	82	Mooar Hill Rd	3	1,262
19.25	83	Apple Ln	1	1,318
19.25	83	Forest View Dr	1	1,319
19.25	83	Long Hill Rd	3	1,319
19.25	83	Long Hill Rd	4	1,319
19.25	83	Mooar Hill Rd	2	1,321
19.25	83	Springvale Dr	1	1,298
19.00	84	Cummings Ln	1	1,537
18.75	85	Abbe Ln	1	186
18.75	85	Colburn Ln	1	1,321
18.75	85	Dalkeith Rd	1	1,296
18.75	85	Hideaway Ln	1	1,321
18.75	85	Hills Farm Ln	1	715
18.75	85	Patch Rd	1	1,319
18.50	86	Barton Rd	1	917
18.50	86	Hideaway Ln	2	1,321
18.50	86	Iron Works Ln	1	1,184
18.50	86	Jambard Rd	2	1,035
18.50	86	Laurel Hill Rd	1	1,318
18.50	86	Marion Dr	1	1,667
18.50	86	Parkhurst Rd	1	135
18.50	86	Van Dyke Rd	3	974
18.25	87	Forest View Dr	2	1,319
18.25	87	Hillside Dr	1	1,320
18.25	87	Marion Dr	1	716
18.25	87	Sumner Ln	1	1,320
18.00	88	Baldwin Ln	2	994
18.00	88	Hillside Dr	2	856
18.00	88	Laurel Hill Rd	2	1,319
18.00	88	Laurel Hill Rd	3	939
18.00	88	Long Hill Rd	5	934
18.00	88	Louise Dr	3	877
18.00	88	Sumner Ln	2	1,051
17.75	89	Emerson Ln	2	882
17.75	89	Hideaway Ln	3	1,131
17.50	90	Emerson Ln	1	1,320

Priority	PCI	Street	Order	Length (ft)
17.50	90	Louise Dr	2	1,320
17.50	90	Mendelssohn Dr	1	1,319
17.50	90	Nutting Ln	1	705
17.50	90	Shipley Dr	1	1,319
17.50	90	Swallow Dr	1	1,320
17.25	91	Brookfield Dr	1	426
17.25	91	Iron Works Ln	1	1,018
17.25	91	Lynne Dr	1	1,798
17.25	91	Maple Knoll Dr	1	1,499
17.25	91	Swallow Dr	2	955
16.75	93	Baldwin Ln	1	1,321
16.75	93	Crestwood Dr	1	1,320
16.75	93	Jambard Rd	1	1,318
16.75	93	Juniper Ln	1	706
16.75	93	Long Hill Rd	2	1,320
16.75	93	Spaulding Ln	1	1,321
16.75	93	Spaulding Ln	2	1,057
16.25	95	Crestwood Dr	2	1,320
16.25	95	Crestwood Dr	3	1,964
16.25	95	Winchester Dr	1	1,632
16.25	95	Woodmont Dr	2	2,091
15.00	100	Louise Dr	1	1,320
15.00	100	Woodmont Dr	1	1,002
1.50	94	Blacksmith Ln	1	1,500
1.50	94	Sawmill Rd	1	1,028
0.00	100	Lovejoy Ln	1	1,460
0.00	100	Read Ln	1	700

APPENDIX TABLE 5: REPAIR DETAIL BY YEAR

Year	Street	Order ID	Repair Category	Repair	Miles Treated	Cost
2019	Ames Rd	1	Crack Sealing	Crack Seal (Major	0.15	\$936
	Arbor Ln	1	Crack Sealing	Crack Seal (Major	0.25	\$2,164
	Arbor Ln	2	Crack Sealing	Crack Seal (Major	0.25	\$2,164
	Arbor Ln	3	Crack Sealing	Crack Seal (Major	0.16	\$1,376
	Cavalier Ct	1	Deferred Maintenance	Defer Maintenance	0.25	\$0
	Cavalier Ct	2	Deferred Maintenance	Defer Maintenance	0.36	\$0
	Cleasby Ln	1	Crack Sealing	Crack Seal (Major	0.04	\$236
	Clinton Dr	1	Crack Sealing	Crack Seal (Major	0.32	\$2,657
	Deacon Ln	1	Overlays	Milling / HMA (1.5")	0.25	\$30,696
	Deacon Ln	1	Pavement Preservation/Maintenance	Asphalt Rubber SAM	0.25	\$18,299
	Deacon Ln	2	Overlays	Milling / HMA (1.5")	0.25	\$30,696
	Deacon Ln	2	Pavement Preservation/Maintenance	Asphalt Rubber SAM	0.25	\$18,299
	Deacon Ln	3	Overlays	Milling / HMA (1.5")	0.25	\$30,696
	Deacon Ln	3	Pavement Preservation/Maintenance	Asphalt Rubber SAM	0.25	\$18,299
	Deacon Ln	4	Overlays	Milling / HMA (1.5")	0.23	\$28,254
	Deacon Ln	4	Pavement Preservation/Maintenance	Asphalt Rubber SAM	0.23	\$16,844
	Drury Ln	1	Deferred Maintenance	Defer Maintenance	0.21	\$0
	Dutton Ln	1	Deferred Maintenance	Defer Maintenance	0.01	\$0
	Farley Rd	1	Overlays	Milling / HMA (1.5")	0.25	\$30,696
	Farley Rd	1	Pavement Preservation/Maintenance	Asphalt Rubber SAM	0.25	\$18,299
	Farley Rd	2	Overlays	Milling / HMA (1.5")	0.25	\$29,538
	Farley Rd	2	Pavement Preservation/Maintenance	Asphalt Rubber SAM	0.25	\$17,609
	Farley Rd	3	Overlays	Milling / HMA (1.5")	0.30	\$35,552
	Farley Rd	3	Pavement Preservation/Maintenance	Asphalt Rubber SAM	0.30	\$21,195
	Federal Hill Rd	1	Deferred Maintenance	Defer Maintenance	0.25	\$0
	Federal Hill Rd	2	Deferred Maintenance	Defer Maintenance	0.36	\$0
	Flint Pond Dr	1	Deferred Maintenance	Defer Maintenance	0.25	\$0
	Flint Pond Dr	2	Deferred Maintenance	Defer Maintenance	0.25	\$0
	Flint Pond Dr	3	Deferred Maintenance	Defer Maintenance	0.23	\$0
	Forrence Dr	1	Overlays	HMA Overlay (1.5")	0.30	\$21,202

Forrence Dr	1	Pavement Preservation/Maintenance	Asphalt Rubber SAM	0.30	\$16,998
Fox Den Rd	1	Crack Sealing	Crack Seal (Major	0.25	\$1,941
French Mill Rd	1	Overlays	Milling / HMA (1.5")	0.25	\$25,954
French Mill Rd	1	Pavement Preservation/Maintenance	Asphalt Rubber SAM	0.25	\$15,472
French Mill Rd	2	Overlays	Milling / HMA (1.5")	0.37	\$38,645
French Mill Rd	2	Pavement Preservation/Maintenance	Asphalt Rubber SAM	0.37	\$23,039
Hannah Dr	1	Crack Sealing	Crack Seal (Major	0.25	\$1,831
Hannah Dr	2	Crack Sealing	Crack Seal (Major	0.25	\$1,833
Hannah Dr	3	Crack Sealing	Crack Seal (Major	0.26	\$1,876
Hillside Dr	1	Crack Sealing	Crack Seal (Major	0.25	\$1,915
Hillside Dr	2	Crack Sealing	Crack Seal (Major	0.16	\$1,242
Irene Dr	1	Crack Sealing	Crack Seal (Major	0.25	\$1,748
Irene Dr	2	Crack Sealing	Crack Seal (Major	0.25	\$1,748
Irene Dr	3	Crack Sealing	Crack Seal (Major	0.25	\$1,748
Irene Dr	4	Crack Sealing	Crack Seal (Major	0.18	\$1,279
Orchard Dr	1	Crack Sealing	Crack Seal (Major	0.25	\$1,750
Orchard Dr	2	Crack Sealing	Crack Seal (Major	0.20	\$1,407
Powers Rd	1	Crack Sealing	Crack Seal (Major	0.25	\$2,168
Powers Rd	2	Crack Sealing	Crack Seal (Major	0.25	\$2,164
Powers Rd	3	Crack Sealing	Crack Seal (Major	0.16	\$1,366
Rideout Rd	1	Crack Sealing	Crack Seal (Major	0.25	\$1,748
Rideout Rd	2	Crack Sealing	Crack Seal (Major	0.25	\$1,748
Rideout Rd	3	Crack Sealing	Crack Seal (Major	0.25	\$1,834
Rideout Rd	4	Crack Sealing	Crack Seal (Major	0.25	\$1,829
Rideout Rd	5	Crack Sealing	Crack Seal (Major	0.25	\$1,833
Rideout Rd	6	Crack Sealing	Crack Seal (Major	0.25	\$1,833
Rideout Rd	7	Crack Sealing	Crack Seal (Major	0.34	\$2,500
S Merrimack Rd	9	Overlays	HMA Overlay (1.5")	0.25	\$19,328
S Merrimack Rd	10	Overlays	HMA Overlay (1.5")	0.25	\$20,222
S Merrimack Rd	11	Overlays	HMA Overlay (1.5")	0.25	\$20,161
S Merrimack Rd	12	Overlays	HMA Overlay (1.5")	0.27	\$22,027
Sargent Rd	1	Crack Sealing	Crack Seal (Major	0.25	\$2,164
Sargent Rd	2	Crack Sealing	Crack Seal (Major	0.18	\$1,517
Sherwood Dr	1	Crack Sealing	Crack Seal (Major	0.25	\$1,830
Sherwood Dr	2	Crack Sealing	Crack Seal (Major	0.31	\$2,277
Truell Rd	1	Crack Sealing	Crack Seal (Major	0.25	\$1,913
Truell Rd	2	Crack Sealing	Crack Seal (Major	0.25	\$1,830
Truell Rd	3	Crack Sealing	Crack Seal (Major	0.33	\$2,417

	Wheat Ln	1	Crack Sealing	Crack Seal (Major	0.09	\$613
	Winding Valley Rd	1	Crack Sealing	Crack Seal (Major	0.32	\$2,220
	Witches Spring Rd	1	Deferred Maintenance	Defer Maintenance	0.25	\$0
	Witches Spring Rd	2	Deferred Maintenance	Defer Maintenance	0.25	\$0
	Witches Spring Rd	3	Deferred Maintenance	Defer Maintenance	0.25	\$0
	Witches Spring Rd	4	Deferred Maintenance	Defer Maintenance	0.25	\$0
	Witches Spring Rd	5	Deferred Maintenance	Defer Maintenance	0.25	\$0
	Witches Spring Rd	6	Deferred Maintenance	Defer Maintenance	0.25	\$0
	Witches Spring Rd	7	Deferred Maintenance	Defer Maintenance	0.35	\$0
	Total for Year 2019				19.15	\$633,676
2020	Alsun Dr	1	Crack Sealing	Crack Seal (Major	0.25	\$1,890
	Alsun Dr	2	Crack Sealing	Crack Seal (Major	0.25	\$1,890
	Alsun Dr	3	Crack Sealing	Crack Seal (Major	0.29	\$2,155
	Buttonwood Dr	1	Overlays	HMA Overlay (1.5")	0.25	\$18,997
	Buttonwood Dr	1	Pavement Preservation/Maintenance	Asphalt Rubber SAM	0.25	\$15,230
	Buttonwood Dr	2	Overlays	HMA Overlay (1.5")	0.25	\$19,026
	Buttonwood Dr	2	Pavement Preservation/Maintenance	Asphalt Rubber SAM	0.25	\$15,253
	Buttonwood Dr	3	Overlays	HMA Overlay (1.5")	0.16	\$12,251
	Buttonwood Dr	3	Pavement Preservation/Maintenance	Asphalt Rubber SAM	0.16	\$9,822
	Cameron Dr	1	Crack Sealing	Crack Seal (Major	0.25	\$2,149
	Cameron Dr	2	Crack Sealing	Crack Seal (Major	0.34	\$2,885
	Deer Run Rd	1	Crack Sealing	Crack Seal (Major	0.25	\$2,059
	Deer Run Rd	2	Crack Sealing	Crack Seal (Major	0.15	\$1,276
	Farm Pond Ln	1	Overlays	HMA Overlay (1.5")	0.13	\$9,916
	Farm Pond Ln	1	Pavement Preservation/Maintenance	Asphalt Rubber SAM	0.13	\$7,950
	Fieldstone Dr	1	Crack Sealing	Crack Seal (Major	0.31	\$2,368
	Fox Den Rd	1	Overlays	HMA Overlay (1.5")	0.25	\$21,122
	Irene Dr	1	Overlays	HMA Overlay (1.5")	0.25	\$19,026
	Irene Dr	1	Pavement Preservation/Maintenance	Asphalt Rubber SAM	0.25	\$15,253
	Irene Dr	2	Overlays	HMA Overlay (1.5")	0.25	\$19,026
	Irene Dr	2	Pavement Preservation/Maintenance	Asphalt Rubber SAM	0.25	\$15,253
	Irene Dr	3	Overlays	HMA Overlay (1.5")	0.25	\$19,026
	Irene Dr	3	Pavement Preservation/Maintenance	Asphalt Rubber SAM	0.25	\$15,253
	Irene Dr	4	Overlays	HMA Overlay (1.5")	0.18	\$13,923

	Irene Dr	4	Pavement Preservation/Maintenance	Asphalt Rubber SAM	0.18	\$11,163
	Jeff Smith Dr	1	Deferred Maintenance	Defer Maintenance	0.11	\$0
	Marion Dr	1	Overlays	HMA Overlay (1.5")	0.14	\$10,320
	Marion Dr	1	Pavement Preservation/Maintenance	Asphalt Rubber SAM	0.14	\$8,274
	Marion Dr	1	Overlays	HMA Overlay (1.5")	0.32	\$24,027
	Marion Dr	1	Pavement Preservation/Maintenance	Asphalt Rubber SAM	0.32	\$19,263
	Meadow Dr	1	Overlays	HMA Overlay (1.5")	0.25	\$18,954
	Meadow Dr	1	Pavement Preservation/Maintenance	Asphalt Rubber SAM	0.25	\$15,195
	Meadow Dr	2	Overlays	HMA Overlay (1.5")	0.25	\$18,161
	Meadow Dr	2	Pavement Preservation/Maintenance	Asphalt Rubber SAM	0.25	\$14,560
	Meadow Dr	3	Overlays	HMA Overlay (1.5")	0.33	\$25,108
	Meadow Dr	3	Pavement Preservation/Maintenance	Asphalt Rubber SAM	0.33	\$20,130
	Powers Rd	1	Overlays	HMA Overlay (1.5")	0.25	\$23,591
	Powers Rd	1	Pavement Preservation/Maintenance	Asphalt Rubber SAM	0.25	\$18,914
	Powers Rd	2	Overlays	HMA Overlay (1.5")	0.25	\$23,555
	Powers Rd	2	Pavement Preservation/Maintenance	Asphalt Rubber SAM	0.25	\$18,885
	Powers Rd	3	Overlays	HMA Overlay (1.5")	0.16	\$14,865
	Powers Rd	3	Pavement Preservation/Maintenance	Asphalt Rubber SAM	0.16	\$11,918
	Tyng Hill Rd	2	Crack Sealing	Crack Seal (Major	0.15	\$1,150
	Total for Year 2020				9.93	\$561,031
2021	Alsun Dr	1	Overlays	HMA Overlay (1.5")	0.25	\$20,569
	Alsun Dr	1	Pavement Preservation/Maintenance	Asphalt Rubber SAM	0.25	\$16,491
	Alsun Dr	2	Overlays	HMA Overlay (1.5")	0.25	\$20,569
	Alsun Dr	2	Pavement Preservation/Maintenance	Asphalt Rubber SAM	0.25	\$16,491
	Alsun Dr	3	Overlays	HMA Overlay (1.5")	0.29	\$23,452
	Alsun Dr	3	Pavement Preservation/Maintenance	Asphalt Rubber SAM	0.29	\$18,802
	Arbor Ln	1	Overlays	HMA Overlay (1.5")	0.25	\$24,309
	Arbor Ln	1	Pavement Preservation/Maintenance	Asphalt Rubber SAM	0.25	\$19,489
	Arbor Ln	2	Overlays	HMA Overlay (1.5")	0.25	\$24,309

Arbor Ln	2	Pavement Preservation/Maintenance	Asphalt Rubber SAM	0.25	\$19,489
Arbor Ln	3	Overlays	HMA Overlay (1.5")	0.16	\$15,451
Arbor Ln	3	Pavement Preservation/Maintenance	Asphalt Rubber SAM	0.16	\$12,388
Black Oak Dr	1	Overlays	HMA Overlay (1.5")	0.25	\$21,488
Black Oak Dr	1	Pavement Preservation/Maintenance	Asphalt Rubber SAM	0.25	\$17,227
Black Oak Dr	2	Overlays	HMA Overlay (1.5")	0.31	\$27,981
Black Oak Dr	2	Pavement Preservation/Maintenance	Asphalt Rubber SAM	0.31	\$22,433
Cleasby Ln	1	Overlays	HMA Overlay (1")	0.04	\$1,792
Clinton Dr	1	Overlays	Milling / HMA (1.5")	0.32	\$40,126
Colburn Ln	1	Crack Sealing	Crack Seal (Major	0.25	\$2,307
Colburn Ln	2	Crack Sealing	Crack Seal (Major	0.30	\$2,740
Deer Run Rd	1	Overlays	HMA Overlay (1.5")	0.25	\$22,405
Deer Run Rd	2	Overlays	HMA Overlay (1.5")	0.15	\$13,889
Dow Rd	1	Crack Sealing	Crack Seal (Major	0.25	\$1,772
Dow Rd	2	Crack Sealing	Crack Seal (Major	0.25	\$1,775
Dow Rd	3	Crack Sealing	Crack Seal (Major	0.25	\$1,775
Dow Rd	4	Crack Sealing	Crack Seal (Major	0.25	\$1,775
Dow Rd	5	Crack Sealing	Crack Seal (Major	0.25	\$1,951
Dow Rd	6	Crack Sealing	Crack Seal (Major	0.25	\$1,952
Dow Rd	7	Crack Sealing	Crack Seal (Major	0.25	\$1,860
Dow Rd	8	Crack Sealing	Crack Seal (Major	0.14	\$1,068
Eastman Ln	1	Overlays	HMA Overlay (1.5")	0.25	\$22,439
Eastman Ln	1	Pavement Preservation/Maintenance	Asphalt Rubber SAM	0.25	\$17,990
Eastman Ln	2	Overlays	HMA Overlay (1.5")	0.14	\$12,121
Eastman Ln	2	Pavement Preservation/Maintenance	Asphalt Rubber SAM	0.14	\$9,717
Long Hill Rd	2	Crack Sealing	Crack Seal (Major	0.25	\$2,039
Milton Pl	1	Crack Sealing	Crack Seal (Major	0.25	\$2,039
Milton Pl	2	Crack Sealing	Crack Seal (Major	0.35	\$2,880
Mooar Hill Rd	1	Overlays	HMA Overlay (1.5")	0.25	\$16,829
Mooar Hill Rd	2	Overlays	HMA Overlay (1.5")	0.25	\$20,585
Mooar Hill Rd	3	Overlays	HMA Overlay (1.5")	0.24	\$19,666
Muzzey Rd	1	Pavement Preservation/Maintenance	Bonded Wearing Course	0.13	\$12,332
Oakwood Ln	1	Overlays	HMA Overlay (1.5")	0.15	\$11,528
Orchard Dr	1	Overlays	HMA Overlay (1.5")	0.25	\$19,649
Orchard Dr	2	Overlays	HMA Overlay (1.5")	0.20	\$15,797

	Parker Ln	1	Crack Sealing	Crack Seal (Major	0.26	\$2,250
	Shedd Ln	1	Crack Sealing	Crack Seal (Major	0.31	\$2,272
	Southgate Rd	1	Crack Sealing	Crack Seal (Major	0.33	\$2,587
	Wright Rd	1	Crack Sealing	Crack Seal (Major	0.25	\$2,039
	Wright Rd	2	Crack Sealing	Crack Seal (Major	0.25	\$2,038
	Total for Year 2021				11.70	\$614,926
2022	Apple Ln	1	Crack Sealing	Crack Seal (Major	0.25	\$1,919
	Apple Ln	2	Crack Sealing	Crack Seal (Major	0.14	\$1,052
	Bell Ln	1	Overlays	HMA Overlay (1")	0.20	\$7,959
	Cummings Ln	1	Crack Sealing	Crack Seal (Major	0.29	\$2,344
	Forest View Dr	1	Crack Sealing	Crack Seal (Major	0.25	\$2,011
	Forest View Dr	2	Crack Sealing	Crack Seal (Major	0.25	\$2,011
	Forest View Dr	3	Crack Sealing	Crack Seal (Major	0.14	\$1,103
	Hannah Dr	1	Overlays	Milling / HMA (1.5")	0.25	\$28,547
	Hannah Dr	1	Pavement Preservation/Maintenance	Asphalt Rubber SAM	0.25	\$17,019
	Hannah Dr	2	Overlays	Milling / HMA (1.5")	0.25	\$28,569
	Hannah Dr	2	Pavement Preservation/Maintenance	Asphalt Rubber SAM	0.25	\$17,032
	Hannah Dr	3	Overlays	Milling / HMA (1.5")	0.26	\$29,240
	Hannah Dr	3	Pavement Preservation/Maintenance	Asphalt Rubber SAM	0.26	\$17,431
	Hickory Ln	1	Overlays	HMA Overlay (1.5")	0.10	\$8,604
	Hickory Ln	1	Pavement Preservation/Maintenance	Asphalt Rubber SAM	0.10	\$6,898
	Laurel Hill Rd	1	Overlays	HMA Overlay (1.5")	0.25	\$21,195
	Laurel Hill Rd	2	Overlays	HMA Overlay (1.5")	0.25	\$22,176
	Laurel Hill Rd	3	Overlays	HMA Overlay (1.5")	0.18	\$15,101
	Long Hill Rd	1	Crack Sealing	Crack Seal (Major	0.25	\$2,104
	Long Hill Rd	2	Deferred Maintenance	Defer Maintenance	0.25	\$0
	Long Hill Rd	3	Crack Sealing	Crack Seal (Major	0.25	\$2,103
	Long Hill Rd	4	Crack Sealing	Crack Seal (Major	0.25	\$2,103
	Long Hill Rd	5	Crack Sealing	Crack Seal (Major	0.18	\$1,489
	Lund Ln	1	Crack Sealing	Crack Seal (Major	0.10	\$598
	Merrill Ln	1	Crack Sealing	Crack Seal (Major	0.35	\$2,400
	Milton Pl	1	Pavement Preservation/Maintenance	Microsurfacing (Single)	0.25	\$9,566
	Milton Pl	2	Pavement Preservation/Maintenance	Microsurfacing (Single)	0.35	\$13,508
	Nevins Rd	1	Overlays	HMA Overlay (1.25")	0.25	\$17,934
	Nevins Rd	2	Overlays	HMA Overlay (1.25")	0.25	\$17,893
	Nevins Rd	3	Overlays	HMA Overlay (1.25")	0.16	\$11,562

	Parker Ln	1	Overlays	HMA Overlay (1.5")	0.26	\$24,491
	Parker Ln	1	Pavement Preservation/Maintenance	Asphalt Rubber SAM	0.26	\$19,635
	Ridge Rd	3	Crack Sealing	Crack Seal (Major	0.10	\$674
	Ridge Rd	8	Crack Sealing	Crack Seal (Major	0.25	\$1,737
	Ridge Rd	9	Crack Sealing	Crack Seal (Major	0.25	\$1,737
	Ridge Rd	10	Crack Sealing	Crack Seal (Major	0.28	\$1,925
	S Merrimack Rd	6	Crack Sealing	Crack Seal (Major	0.25	\$2,287
	S Merrimack Rd	7	Crack Sealing	Crack Seal (Major	0.25	\$2,011
	S Merrimack Rd	8	Crack Sealing	Crack Seal (Major	0.25	\$2,010
	Shedd Ln	1	Overlays	HMA Overlay (1")	0.31	\$16,714
	Shedd Ln	1	Pavement Preservation/Maintenance	Asphalt Rubber SAM	0.31	\$19,826
	Sherwood Dr	1	Overlays	HMA Overlay (1.5")	0.25	\$21,212
	Sherwood Dr	1	Pavement Preservation/Maintenance	Asphalt Rubber SAM	0.25	\$17,006
	Sherwood Dr	2	Overlays	HMA Overlay (1.5")	0.31	\$26,390
	Sherwood Dr	2	Pavement Preservation/Maintenance	Asphalt Rubber SAM	0.31	\$21,157
	Southgate Rd	1	Overlays	HMA Overlay (1")	0.33	\$19,031
	Springvale Dr	1	Crack Sealing	Crack Seal (Major	0.25	\$2,249
	Toddy Brook Rd	1	Overlays	HMA Overlay (1.5")	0.20	\$13,723
	Toddy Brook Rd	1	Pavement Preservation/Maintenance	Asphalt Rubber SAM	0.20	\$11,002
	Winding Valley Rd	1	Overlays	HMA Overlay (1.5")	0.32	\$25,727
	Winding Valley Rd	1	Pavement Preservation/Maintenance	Asphalt Rubber SAM	0.32	\$20,626
	Total for Year 2022				12.29	\$582,641
2023	Abbe Ln	1	Crack Sealing	Crack Seal (Major	0.04	\$386
	Ames Rd	1	Overlays	HMA Overlay (1.5")	0.15	\$11,194
	Barton Rd	1	Overlays	HMA Overlay (1")	0.17	\$9,351
	Barton Rd	1	Pavement Preservation/Maintenance	Asphalt Rubber SAM	0.17	\$11,092
	Blood Rd	1	Crack Sealing	Crack Seal (Major	0.25	\$2,077
	Blood Rd	2	Crack Sealing	Crack Seal (Major	0.25	\$2,077
	Blood Rd	3	Crack Sealing	Crack Seal (Major	0.25	\$2,077
	Blood Rd	4	Crack Sealing	Crack Seal (Major	0.16	\$1,353
	Dalkeith Rd	1	Pavement Preservation/Maintenance	Microsurfacing (Single)	0.25	\$8,850
	Glenice Dr	1	Crack Sealing	Crack Seal (Major	0.13	\$1,089
	Hideaway Ln	1	Crack Sealing	Crack Seal (Major	0.25	\$2,173
	Hideaway Ln	2	Crack Sealing	Crack Seal (Major	0.25	\$2,173

Hideaway Ln	3	Crack Sealing	Crack Seal (Major	0.21	\$1,861
Hills Farm Ln	1	Crack Sealing	Crack Seal (Major	0.14	\$1,176
Howe Ln	1	Overlays	HMA Overlay (1")	0.25	\$14,806
Howe Ln	2	Overlays	HMA Overlay (1")	0.25	\$14,806
Howe Ln	3	Overlays	HMA Overlay (1")	0.25	\$14,806
Howe Ln	4	Overlays	HMA Overlay (1")	0.16	\$9,467
Parkhurst Rd	1	Crack Sealing	Crack Seal (Major	0.03	\$241
Patch Rd	1	Crack Sealing	Crack Seal (Major	0.25	\$2,453
Patch Rd	2	Crack Sealing	Crack Seal (Major	0.13	\$1,324
Plain Rd	1	Pavement Preservation/Maintenance	Bonded Wearing Course	0.25	\$26,654
Plain Rd	2	Pavement Preservation/Maintenance	Bonded Wearing Course	0.25	\$26,694
Plain Rd	3	Pavement Preservation/Maintenance	Bonded Wearing Course	0.13	\$13,367
Rocky Pond Rd		Crack Sealing	Crack Seal (Major	0.12	\$1,078
Rocky Pond Rd	1	Crack Sealing	Crack Seal (Major	0.25	\$2,266
Rocky Pond Rd	2	Crack Sealing	Crack Seal (Major	0.25	\$2,270
Rocky Pond Rd	3	Crack Sealing	Crack Seal (Major	0.25	\$2,266
Rocky Pond Rd	4	Crack Sealing	Crack Seal (Major	0.25	\$2,266
Rocky Pond Rd	5	Crack Sealing	Crack Seal (Major	0.25	\$2,266
Rocky Pond Rd	6	Crack Sealing	Crack Seal (Major	0.25	\$2,265
Rocky Pond Rd	7	Crack Sealing	Crack Seal (Major	0.25	\$2,265
S Merrimack Rd	1	Crack Sealing	Crack Seal (Major	0.25	\$2,259
S Merrimack Rd	2	Crack Sealing	Crack Seal (Major	0.25	\$2,265
S Merrimack Rd	3	Crack Sealing	Crack Seal (Major	0.25	\$2,268
S Merrimack Rd	4	Crack Sealing	Crack Seal (Major	0.25	\$2,362
S Merrimack Rd	5	Crack Sealing	Crack Seal (Major	0.25	\$2,361
Sargent Rd	1	Overlays	HMA Overlay (1.5")	0.25	\$25,890
Sargent Rd	1	Pavement Preservation/Maintenance	Asphalt Rubber SAM	0.25	\$20,757
Sargent Rd	2	Overlays	HMA Overlay (1.5")	0.18	\$18,143
Sargent Rd	2	Pavement Preservation/Maintenance	Asphalt Rubber SAM	0.18	\$14,545
Spaulding Ln	1	Overlays	HMA Overlay (1")	0.25	\$12,797
Spaulding Ln	2	Overlays	HMA Overlay (1")	0.20	\$10,239
State Access Rd	1	Overlays	HMA Overlay (1")	0.34	\$0
Sumner Ln	1	Overlays	HMA Overlay (1")	0.25	\$14,133
Sumner Ln	2	Overlays	HMA Overlay (1")	0.20	\$11,253
Van Dyke Rd	3	Crack Sealing	Crack Seal (Major	0.18	\$1,394
Woodmont Dr		Deferred Maintenance	Defer Maintenance	0.19	\$0

	Woodmont Dr		Deferred Maintenance	Defer Maintenance	0.40	\$0
	Total for Year 2023				10.59	\$339,157
2024	Brookfield Dr	1	Crack Sealing	Crack Seal (Major	0.08	\$912
	Emerson Ln	1	Crack Sealing	Crack Seal (Major	0.25	\$1,949
	Emerson Ln	2	Crack Sealing	Crack Seal (Major	0.17	\$1,302
	Hideaway Ln	1	Pavement Preservation/Maintenance	Microsurfacing (Single)	0.25	\$10,195
	Hideaway Ln	2	Pavement Preservation/Maintenance	Microsurfacing (Single)	0.25	\$10,195
	Hideaway Ln	3	Pavement Preservation/Maintenance	Microsurfacing (Single)	0.21	\$8,729
	Hillside Dr	1	Pavement Preservation/Maintenance	Microsurfacing (Single)	0.25	\$10,188
	Hillside Dr	2	Pavement Preservation/Maintenance	Microsurfacing (Single)	0.16	\$6,607
	Iron Works Ln	1	Crack Sealing	Crack Seal (Major	0.19	\$1,428
	Iron Works Ln	1	Crack Sealing	Crack Seal (Major	0.22	\$1,836
	Jewett Ln	1	Pavement Preservation/Maintenance	Bonded Wearing Course	0.25	\$29,876
	Jewett Ln	2	Pavement Preservation/Maintenance	Bonded Wearing Course	0.25	\$26,331
	Jewett Ln	3	Pavement Preservation/Maintenance	Bonded Wearing Course	0.25	\$27,507
	Jewett Ln	4	Pavement Preservation/Maintenance	Bonded Wearing Course	0.19	\$21,234
	Louise Dr	1	Crack Sealing	Crack Seal (Major	0.25	\$2,729
	Louise Dr	2	Crack Sealing	Crack Seal (Major	0.25	\$2,729
	Louise Dr	3	Crack Sealing	Crack Seal (Major	0.17	\$1,813
	Love Ln	1	Crack Sealing	Crack Seal (Major	0.25	\$1,853
	Love Ln	2	Crack Sealing	Crack Seal (Major	0.27	\$1,978
	Lynne Dr	1	Pavement Preservation/Maintenance	Microsurfacing (Single)	0.34	\$12,067
	Maple Knoll Dr	1	Crack Sealing	Crack Seal (Major	0.28	\$2,324
	Mendelssohn Dr	1	Crack Sealing	Crack Seal (Major	0.25	\$2,142
	Mendelssohn Dr	2	Crack Sealing	Crack Seal (Major	0.24	\$2,058
	Nutting Ln	1	Crack Sealing	Crack Seal (Major	0.13	\$1,145
	Patch Rd	1	Overlays	HMA Overlay (1")	0.25	\$18,044
	Patch Rd	1	Pavement Preservation/Maintenance	Asphalt Rubber SAM	0.25	\$21,405
	Patch Rd	2	Overlays	HMA Overlay (1")	0.13	\$9,740
	Patch Rd	2	Pavement Preservation/Maintenance	Asphalt Rubber SAM	0.13	\$11,554

	Shipley Dr	1	Crack Sealing	Crack Seal (Major	0.25	\$2,337
	Shipley Dr	2	Overlays	HMA Overlay (1")	0.15	\$10,330
	Swallow Dr	1	Overlays	HMA Overlay (1")	0.25	\$16,669
	Swallow Dr	2	Overlays	HMA Overlay (1")	0.18	\$12,060
	Truell Rd	1	Overlays	HMA Overlay (1.5")	0.25	\$23,618
	Truell Rd	1	Pavement Preservation/Maintenance	Asphalt Rubber SAM	0.25	\$18,935
	Truell Rd	2	Overlays	HMA Overlay (1.5")	0.25	\$22,591
	Truell Rd	2	Pavement Preservation/Maintenance	Asphalt Rubber SAM	0.25	\$18,112
	Truell Rd	3	Overlays	HMA Overlay (1.5")	0.33	\$29,836
	Truell Rd	3	Pavement Preservation/Maintenance	Asphalt Rubber SAM	0.33	\$23,920
	Twiss Ln	1	Pavement Preservation/Maintenance	Bonded Wearing Course	0.25	\$26,311
	Twiss Ln	2	Pavement Preservation/Maintenance	Bonded Wearing Course	0.25	\$26,311
	Twiss Ln	3	Pavement Preservation/Maintenance	Bonded Wearing Course	0.25	\$26,291
	Twiss Ln	4	Pavement Preservation/Maintenance	Bonded Wearing Course	0.29	\$30,397
	Wright Rd	5	Crack Sealing	Crack Seal (Major	0.36	\$3,263
	Total for Year 2024				10.08	\$540,848
2025	Baldwin Ln	1	Overlays	HMA Overlay (1.5")	0.25	\$26,533
	Baldwin Ln	2	Overlays	HMA Overlay (1.5")	0.19	\$19,965
	Blacksmith Ln		Crack Sealing	Crack Seal (Major	0.00	\$0
	Crestwood Dr	1	Crack Sealing	Crack Seal (Major	0.25	\$2,514
	Crestwood Dr	2	Crack Sealing	Crack Seal (Major	0.25	\$2,514
	Crestwood Dr	3	Crack Sealing	Crack Seal (Major	0.37	\$3,741
	Farley Rd	1	Crack Sealing	Crack Seal (Major	0.25	\$2,212
	Farley Rd	2	Crack Sealing	Crack Seal (Major	0.25	\$2,214
	Farley Rd	3	Crack Sealing	Crack Seal (Major	0.25	\$2,214
	Farley Rd	4	Crack Sealing	Crack Seal (Major	0.25	\$2,214
	Farley Rd	5	Crack Sealing	Crack Seal (Major	0.25	\$2,211
	Farley Rd	6	Crack Sealing	Crack Seal (Major	0.25	\$2,211
	Farley Rd	7	Crack Sealing	Crack Seal (Major	0.32	\$2,794
	Gilson Rd	1	Crack Sealing	Crack Seal (Major	0.11	\$955
	Hayden Rd	1	Crack Sealing	Crack Seal (Major	0.25	\$2,211
	Hayden Rd	2	Crack Sealing	Crack Seal (Major	0.25	\$2,211
	Hayden Rd	3	Crack Sealing	Crack Seal (Major	0.25	\$2,212
	Hayden Rd	4	Crack Sealing	Crack Seal (Major	0.25	\$2,212
	Hayden Rd	5	Crack Sealing	Crack Seal (Major	0.25	\$2,212

	Hayden Rd	6	Crack Sealing	Crack Seal (Major	0.25	\$2,212
	Hayden Rd	7	Crack Sealing	Crack Seal (Major	0.25	\$2,211
	Hayden Rd	8	Crack Sealing	Crack Seal (Major	0.25	\$2,212
	Hayden Rd	9	Crack Sealing	Crack Seal (Major	0.25	\$2,214
	Hayden Rd	10	Crack Sealing	Crack Seal (Major	0.30	\$3,000
	Jambard Rd	1	Overlays	HMA Overlay (1")	0.25	\$15,029
	Jambard Rd	1	Pavement Preservation/Maintenance	Asphalt Rubber SAM	0.25	\$17,828
	Jambard Rd	2	Overlays	HMA Overlay (1")	0.20	\$11,802
	Jambard Rd	2	Pavement Preservation/Maintenance	Asphalt Rubber SAM	0.20	\$14,000
	Juniper Ln	1	Crack Sealing	Crack Seal (Major	0.13	\$1,076
	Maple Knoll Dr	1	Pavement Preservation/Maintenance	Microsurfacing (Single)	0.28	\$10,901
	Old Runnells Bridge Rd	1	Crack Sealing	Crack Seal (Major	0.25	\$2,212
	Old Runnells Bridge Rd	2	Crack Sealing	Crack Seal (Major	0.22	\$1,986
	Ranger Rd	1	Crack Sealing	Crack Seal (Major	0.25	\$1,911
	Ranger Rd	2	Crack Sealing	Crack Seal (Major	0.25	\$1,911
	Ranger Rd	3	Crack Sealing	Crack Seal (Major	0.25	\$1,909
	Ranger Rd	4	Crack Sealing	Crack Seal (Major	0.28	\$2,155
	Rideout Rd	1	Overlays	HMA Overlay (1.5")	0.25	\$22,271
	Rideout Rd	2	Overlays	HMA Overlay (1.5")	0.25	\$22,271
	Rideout Rd	3	Overlays	HMA Overlay (1.5")	0.25	\$23,367
	Rideout Rd	4	Overlays	HMA Overlay (1.5")	0.25	\$23,296
	Rideout Rd	5	Overlays	HMA Overlay (1.5")	0.25	\$23,349
	Rideout Rd	6	Overlays	HMA Overlay (1.5")	0.25	\$23,349
	Rideout Rd	7	Overlays	HMA Overlay (1.5")	0.34	\$31,851
	Sawmill Rd		Crack Sealing	Crack Seal (Major	0.00	\$0
	Spaulding Ln	1	Crack Sealing	Crack Seal (Major	0.25	\$1,912
	Spaulding Ln	2	Crack Sealing	Crack Seal (Major	0.20	\$1,530
	Winchester Dr	1	Crack Sealing	Crack Seal (Major	0.31	\$2,860
	Wright Rd	3	Crack Sealing	Crack Seal (Major	0.25	\$2,313
	Wright Rd	4	Crack Sealing	Crack Seal (Major	0.25	\$2,313
	Total for Year 2025				11.70	\$358,604
2026	Hardy Ln	1	Rehabilitate and Rebuild	FDR w/ Asphalt Stabilization and HMA (3")	0.22	\$65,525
	Juniper Ln	1	Pavement Preservation/Maintenance	Microsurfacing (Single)	0.13	\$5,046
	Lovejoy Ln		Crack Sealing	Crack Seal (Major	0.00	\$0

Nartoff Rd	1	Crack Sealing	Crack Seal (Major	0.25	\$2,496
Nartoff Rd	2	Crack Sealing	Crack Seal (Major	0.25	\$2,491
Nartoff Rd	3	Crack Sealing	Crack Seal (Major	0.25	\$2,491
Nartoff Rd	4	Crack Sealing	Crack Seal (Major	0.25	\$2,491
Nartoff Rd	5	Crack Sealing	Crack Seal (Major	0.20	\$1,944
Pierce Ln	1	Crack Sealing	Crack Seal (Major	0.25	\$2,285
Pierce Ln	2	Crack Sealing	Crack Seal (Major	0.35	\$3,172
Pine Hill Rd	1	Crack Sealing	Crack Seal (Major	0.25	\$2,906
Pine Hill Rd	2	Crack Sealing	Crack Seal (Major	0.25	\$2,906
Pine Hill Rd	3	Crack Sealing	Crack Seal (Major	0.25	\$2,906
Pine Hill Rd	4	Crack Sealing	Crack Seal (Major	0.25	\$2,904
Pine Hill Rd	5	Crack Sealing	Crack Seal (Major	0.25	\$2,906
Pine Hill Rd	6	Crack Sealing	Crack Seal (Major	0.25	\$2,387
Pine Hill Rd	7	Crack Sealing	Crack Seal (Major	0.25	\$2,385
Pine Hill Rd	8	Crack Sealing	Crack Seal (Major	0.25	\$2,392
Pine Hill Rd	9	Crack Sealing	Crack Seal (Major	0.25	\$2,383
Pine Hill Rd	10	Crack Sealing	Crack Seal (Major	0.25	\$2,387
Pine Hill Rd	11	Crack Sealing	Crack Seal (Major	0.25	\$2,387
Pine Hill Rd	12	Crack Sealing	Crack Seal (Major	0.25	\$2,802
Pine Hill Rd	13	Crack Sealing	Crack Seal (Major	0.25	\$2,806
Pine Hill Rd	14	Crack Sealing	Crack Seal (Major	0.28	\$3,104
Read Ln		Crack Sealing	Crack Seal (Major	0.00	\$0
Tyng Hill Rd	1	Rehabilitate and Rebuild	FDR w/ Asphalt Stabilization and HMA (3")	0.25	\$75,804
Wheeler Rd	1	Rehabilitate and Rebuild	FDR w/ Asphalt Stabilization and HMA (3")	0.25	\$79,250
Wheeler Rd	2	Rehabilitate and Rebuild	FDR w/ Asphalt Stabilization and HMA (3")	0.25	\$79,250
Wheeler Rd	3	Rehabilitate and Rebuild	FDR w/ Asphalt Stabilization and HMA (3")	0.25	\$79,370
Wheeler Rd	4	Rehabilitate and Rebuild	FDR w/ Asphalt Stabilization and HMA (3")	0.25	\$75,919
Wheeler Rd	5	Rehabilitate and Rebuild	FDR w/ Asphalt Stabilization and HMA (3")	0.25	\$75,861
Total for Year 2026				7.17	\$590,956

2027	Wheeler Rd	6	Rehabilitate and Rebuild	FDR w/ Asphalt Stabilization and HMA (3")	0.25	\$78,230
	Wheeler Rd	7	Rehabilitate and Rebuild	FDR w/ Asphalt Stabilization and HMA (3")	0.25	\$78,230
	Wheeler Rd	8	Rehabilitate and Rebuild	FDR w/ Asphalt Stabilization and HMA (3")	0.25	\$78,289
	Wheeler Rd	9	Rehabilitate and Rebuild	FDR w/ Asphalt Stabilization and HMA (3")	0.25	\$78,289
	Worcester Rd	1	Rehabilitate and Rebuild	FDR w/ Asphalt Stabilization and HMA (3")	0.25	\$64,006
	Worcester Rd	2	Rehabilitate and Rebuild	FDR w/ Asphalt Stabilization and HMA (3")	0.25	\$64,103
	Worcester Rd	3	Rehabilitate and Rebuild	FDR w/ Asphalt Stabilization and HMA (3")	0.25	\$64,006
	Worcester Rd	4	Rehabilitate and Rebuild	FDR w/ Asphalt Stabilization and HMA (3")	0.25	\$64,006
	Worcester Rd	5	Rehabilitate and Rebuild	FDR w/ Asphalt Stabilization and HMA (3")	0.25	\$64,006
	Total for Year 2027				2.25	\$633,166
2028	Wheeler Rd	10	Rehabilitate and Rebuild	FDR w/ Asphalt Stabilization and HMA (3")	0.25	\$77,122
	Wheeler Rd	11	Rehabilitate and Rebuild	FDR w/ Asphalt Stabilization and HMA (3")	0.25	\$77,122
	Wheeler Rd	12	Rehabilitate and Rebuild	FDR w/ Asphalt Stabilization and HMA (3")	0.25	\$77,122
	Wheeler Rd	13	Rehabilitate and Rebuild	FDR w/ Asphalt Stabilization and HMA (3")	0.28	\$86,054

	Worcester Rd	6	Rehabilitate and Rebuild	FDR w/ Asphalt Stabilization and HMA (3")	0.25	\$66,004
	Worcester Rd	7	Rehabilitate and Rebuild	FDR w/ Asphalt Stabilization and HMA (3")	0.25	\$66,004
	Worcester Rd	8	Rehabilitate and Rebuild	FDR w/ Asphalt Stabilization and HMA (3")	0.25	\$69,724
	Worcester Rd	9	Rehabilitate and Rebuild	FDR w/ Asphalt Stabilization and HMA (3")	0.25	\$69,724
	Worcester Rd	10	Rehabilitate and Rebuild	FDR w/ Asphalt Stabilization and HMA (3")	0.23	\$63,333
	Total for Year 2028				2.26	\$652,209
	Total				97.12	\$5,507,213